

EVERCORE

EVERCORE



Achieve a quality life by chip

FOSHAN EVERCORE OPTOELECTRONIC TECHNOLOGY CO.,LTD

Address:Unit 1111-1113,Bldg.6,Area A Hantian
Science & Technology Park,Nanhai Distrct,
Foshan City,Guangdong Province,China Zip:528200

Contact: Sharon Sun
Tel: +86-757-81206369
Fax: +86-757-81206361
E-mail: sales8@evercore.cn;
sharon.sun@evercore.cn

www.led-cob.com
www.evercorecob.com



HUMAN CENTRIC | RHYTHMIC | WELLNESS

Light · Inspiring Innovation.....

Single Color COB




High Efficiency Series Standard Edition

| | | | |
|--|--|--|--|
|  Model: BH1306 LES: 4.6mm Size: 13.5*13.5mm Power:7-14W |  Model: BH1375 LES: 6mm Size: 13.5*13.5mm Power:3-18W |  Model: BH1311 LES: 9mm Size: 13.5*13.5mm Power:9-36W |  Model: BH1917 LES: 15mm Size: 19*19mm Power:15-72W |
|--|--|--|--|

High Efficiency Series Ultimate Edition

| | | | |
|---|---|---|--|
|  Model: SH1306 LES: 4.6mm Size: 13.5*13.5mm Power:3-5W |  Model: SH1375 LES: 6mm Size: 13.5*13.5mm Power:3-7W |  Model: SH1311 LES: 9mm Size: 13.5*13.5mm Power:10-16W |  Model: SH1917 LES: 15mm Size: 19*19mm Power:20-42W |
|---|---|---|--|

High Efficiency Series Constant Voltage

| | | | |
|---|---|---|--|
|  Model: HC1308 LES: 6.7mm Size: 13.35*13.35mm Power:7.9W |  Model: HC1611 LES: 9.5mm Size: 16.8*15.8mm Power:12-15W |  Model: HC1917 LES: 15.1mm Size: 19*19mm Power:18/24/30W | |
|---|---|---|--|

High Efficiency Series High Density

| | | | |
|--|--|---|--|
|  Model: BH1105 LES: 3.5mm Power:4-8W |  Model: BH1306 LES: 6mm Size: 13.5*13.5mm Power:7-14W |  Model: BH1375 LES: 9mm Size: 13.5*13.5mm Power:13-29W |  Model: BH16105 LES: 9mm Size: 19.85*19.85mm Power:20-40W |
|--|--|---|--|

Full Spectrum Series Standard Edition



| | | | |
|---|---|---|---|
|  Model: BH1306 LES: 4.6mm Size: 13.5*13.5mm Power:7-14W |  Model: BH1375 LES: 6mm Size: 13.5*13.5mm Power:3-18W |  Model: BH1311 LES: 9mm Size: 13.5*13.5mm Power:9-36W |  Model: BH1917 LES: 15mm Size: 19*19mm Power:15-72W |
|---|---|---|---|

Full Spectrum Series Ultimate Edition

| | | | |
|--|--|--|--|
|  Model: BH1306 LES: 4.6mm Size: 13.5*13.5mm Power:7-14W |  Model: BH1375 LES: 6mm Size: 13.5*13.5mm Power:3-18W |  Model: BH1311 LES: 9mm Size: 13.5*13.5mm Power:9-36W |  Model: BH1917 LES: 15mm Size: 19*19mm Power:15-72W |
|--|--|--|--|

Single Color SMD

High-power Ceremic SMD Series 3535

| | | | |
|--|--|--|--|
|  Model: CX3535-W LES: 2.85mm Size: 3.45*3.45mm Power:1-3W/1-5W/1-10W CCT:2700K/3000/4000K Ra:70/80/90 |  Model: CX3535-R LES: 2.85mm Size: 3.45*3.45mm Power:0.8-1W R: 620-630nm |  Model: CX3535-G LES: 2.85mm Size: 3.45*3.45mm Power:1-3W G: 520-530nm |  Model: CX3535-B LES: 2.85mm Size: 3.45*3.45mm Power:1-3W G: 450-460nm |
|--|--|--|--|





High-power Ceremic SMD Series 4040/5050

| | | | |
|--|--|--|--|
|  Model: CX4040-W LES: 4.0*3.7mm Size: 1.0*1.0mm Power:10/20W CCT:6000K-6500K Ra:60 |  Model: CX5050-W LES: 4.95*4.95mm Size: 1.0*1.0mm Power:10/20W CCT:6000K-6500K Ra:60 | | |
|--|--|--|--|

Multiple color COB

CCT Tunable Series Standard Edition

| | | | |
|---|--|--|--|
|  Model: CK1308 LES: 6.5mm Size: 13.5*13.5mm Power:10-18W |  Model: CK1611 LES: 9.5mm Size: 16.8*15.85mm Power:20-30W |  Model: CK1814 LES: 12mm Size: 17.65*17.85mm Power:30-50W |  Model: CK1917 LES: 15mm Size: 19*19mm Power:33-90W |
|---|--|--|--|

| | | | |
|--|--|---|---|
|  Model: SK1814 LES: 12.8mm Size: 12.85*17.85mm Power:24-35W |  Model: SK1917 LES: 15mm Size: 19*19mm Power:30-45W |  Model: SK28245 LES: 22mm Size: 28*28mm Power:100-126W |  Model: SK7059 LES:59.5mm Size: 70*70mm Power:300-350W |
|--|--|---|---|



CCT Tunable Series Constant Voltage COB

| | | | |
|---|---|--|--|
|  Model: HK1375 LES: 6.3mm Size: 13.35*13.35mm Power:7W |  Model: HK16105 LES: 9.8mm Size: 15.8*15.8mm Power:12W |  Model: HK1917 LES: 15.6mm Size: 19*19mm Power:24/30W | |
|---|---|--|--|

CCT Tunable Series Dim to Warm COB

| | | | |
|--|---|--|--|
|  Model: DK1311 LES: 9mm Size: 13.5*13.5mm Power:0.9-13W |  Model: DK1916 LES: 14mm Size: 19*19mm Power:1.8-23W | | |
|--|---|--|--|

RGBCW Series COB



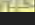

| | | | |
|---|---|--|--|
|  Model: NCW-30W-24V LES: 9.8mm Size: 16*16mm Power:4.6W(R) 7-10W(GBCV) |  Model: NCW-60W-36V LES: 12.5mm Size: 18*18mm Power:12-18W(RGB) 12-19W(CV) |  Model: NCW-50W-36V LES: 15.0mm Size: 19*19mm Power:6-18W(R) 12-19W(GBCV) |  Model: NCW-100W-36V LES: 18.0mm Size: 23*23mm Power:12-15W(RGB) 23-33W(CV) |
|---|---|--|--|

RGBCW Series Module

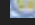
| | | | |
|---|--|---|--|
|  Model: DCW-30W-24V LES: 11.3mm Size: 19*19mm Power:4-6W(R) 7-10W(GBCV) |  Model: DCW-60W-36V LES: 14.5mm Size: 19*19mm Power:12-16W(RGB) 12-19W(CV) |  Model: SLEM7214A LES: 14mm Size: 65.8*71.6mm AC:220V 50/60Hz Power:12W | |
|---|--|---|--|

Multiple color SMD

High-power Ceremic SMD Series 3535/5060

| | | | |
|---|--|--|---|
|  Model: 3535-CW LES: 2.85mm Size: 3.45*3.45mm Power:4-6W |  Model: CX3535-RGBW LES: 2.85mm Size: 3.45*3.45mm Power:0.8-1W(R) 1-1.5W(GBCV) |  Model: CX5060-RGBW-15W LES: 10*2.8mm Size: 4.8*5.8mm Power:1.5-4W(R) 2-4-1W(GBCV) |  Model: CX5060-RGBW-40W LES: 10*2.8mm Size: 4.8*5.8mm Power:2.5-7.5W(R) 3-10W(GBCV) |
|---|--|--|---|

High-power Ceremic SMD Series 5050

| | |
|---|--|
|  Model: CX5050-RGBCW LES: 4.5mm Size: 4.95*4.95mm Power:0.3-0.5W(R) 0.5-0.6W(GB),0.5-1.2W(CV) | |
|---|--|

ECOLOGY

Enviromental Friendly

EVERCORE

HUMAN CENTRIC | RHYTHMIC | WELLNESS

We are committed to create a homonious, natural and human centric environment.
Keep exploring the mystery of light, studying the correlation of light and color,
creating the value of light, such as light to human health,
to new applications, to the future...





Honor

Quality system

- ISO9001:2015 Quality Management System
- Intellectual Property System
- IESLM-80 certification
- EN62471 certification



Company Name: Foshan Evercore Optoelectronic Technology Co, Ltd.
 Headquarters : Foshan, Guangdong Province
 Production Base : Longyan, Fujian Province
 R & D platform: Evercore & Sun Yat-sen University Chip and photoelectric integration joint laboratory

Intellectual property

- 100+ COB and other related patents
- Invention Patent
 Authorized multiple Chinese core invention patents and European and American invention patents
- Appearance Design patent
 Authorized multiple Chinese design patents
- Utility model patents
 Authorized multiple Chinese utility model patents

Established: **2010** Registered capital: **11,000,000** Patents: **100+**

Product focus: Photoelectric integrated module COB
 Market area: Intelligent lighting & Commercial Lighting & Special Lighting



Development Course

2010

Evercore established

The project of "technology development of integrated white light source module with high color rendering" was approved provincially.

2012

Leading performance of COB for down light

COB performance for down light upgraded to Ra>90, 90lm/W

2014

Full-spectrum COB

Guangdong LED semiconductor lighting base; COB of Ra>97 into mass productio

2015

AC COB Gen 2 and full spectrum COB

AC COB LM-80 certified with 9000H test; Color evaluation system introduced

2018

HD COB, CCT Tunable COB

25W with LES 6mm;
50W with LES 9mm;
CSC techniques
Soft tuning, good color-mixing

2019

2 SDCM

high-end commercial lighting and smart products are with 2-step SDCM standard

2021

First one to Launch RGBCW COB Capacity upgrade

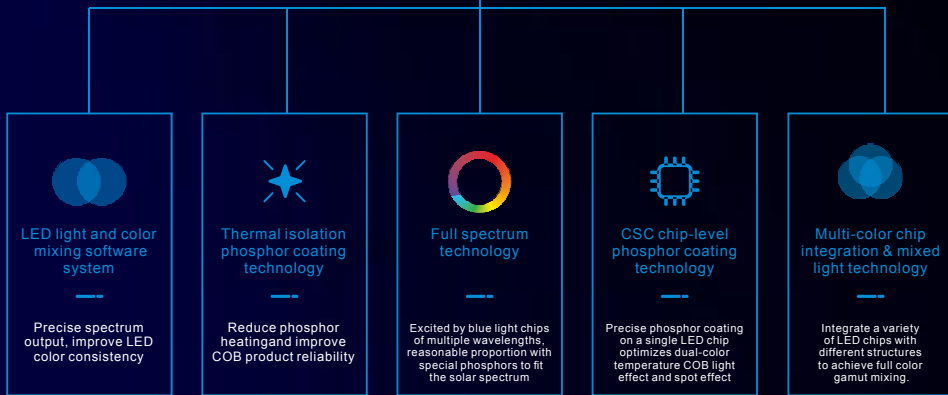
The world's first intelligent RGBCW launched. Fujian manufacturing base of 10000 square meters

2023

RGBCW intelligent AC COB Constant voltage COB

Launched RGBCW soldering-free COB with new chip array /AC COB / constant voltage COB

Key technologies



Applications



High-end commercial lighting



High-end store lighting



Smart traffic lighting



IOT Human Centric lighting

General lighting



Automotive lighting



Portable lighting

Special lighting



Horticultural lighting

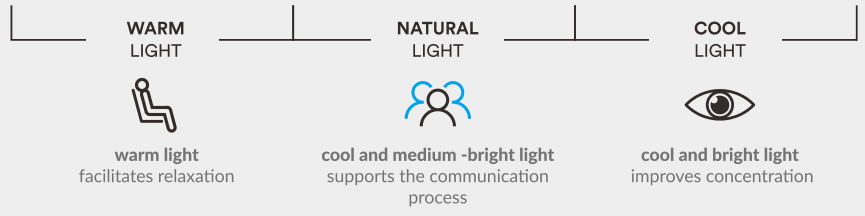


Marine lighting

INTELLIGENT • FULL COLOR



1000K 2700K 3500K 4500K 6500K 7500K 10000K 20000K

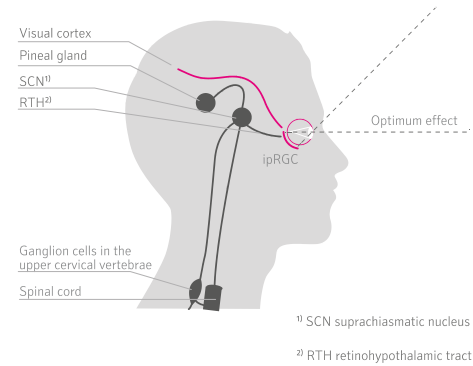


Color.space can be used in all places where people are present. In particular

- improve effectiveness when working in an office
- ensure that your mood is good and improve recovery of patients in hospitals
- positively influence concentration and learning effectiveness in schools
- create an appropriate environment for discussions and meeting in conference halls
- maintain high level of productivity, 24 hours a day, in production halls
- emphasise products and their colours in shops improve the level of artistic experiences in museums

THE MELANOPIC EFFECT OF LIGHT

Since the discovery of the non-visual photoreceptors (ipRGC) in the year 2002, it is known that the light that enters the eye has an effect on the human being that goes beyond the pure function of vision. This applies in particular to how the human eye receives and uses the blue parts of the spectrum.



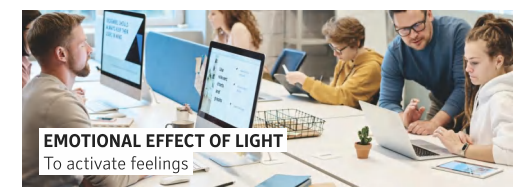
THE WHOLE IS MORE THAN THE SUM OF ITS PARTS

The term Human Centric Lighting refers to the holistic view of the effect of light on human beings, the goal being to apply artificial lighting in order to have a positive impact on people's feeling of well-being. Besides the functional aspects of light and the way it can be applied to enhance architecture, the biological effect of light, which can be further subdivided into a melanopic and an emotional component, plays a crucial role.



LIGHT THAT ENTERS THE EYE

synchronises the biological clock and influences the secretion of hormones influences physiology, health and behaviour impacts our performance and feeling of well-being



PLANT GROWTH LIGHT





Contents

Company Profile

Development History and Honors and Qualifications

Core technologies and application areas

02 High Efficiency Series COB

Standard Edition

Ultimate Edition

High density Edition

Constant Voltage Edition

10 Full Spectrum Series COB

Standard Edition

Ultimate Edition

14 CCT Tunable Series COB

Standard Edition

Constant voltage CCT tunable COB

Dim to Warm COB

22 RGBCW Series

RGBCW COB

RGBCW Welding-free

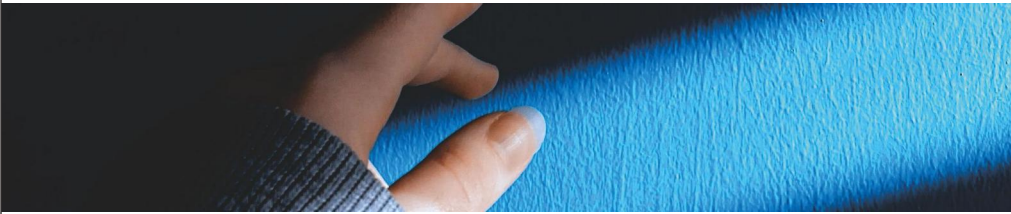
RGBCW DOB

26 High-power Ceramic SMD Series

Single color SMD

Multi-color SMD

High Efficiency Series COB



- High Efficiency $>190\text{lm/W}; >175\text{lm/W}; >165\text{lm/W}; >145\text{lm/W}$
- High CRI (Ra $>80/90$)
- High color consistency (Chromatic aberration $\leq 2\text{SDCM}$)
- Replacement of international brands
- 5-50W PIN TO PIN
- Sedimentation Process
- Anti-high temperature and anti-vulcanization

High Efficiency Series COB

Standard Edition
Ultimate Edition
High density Edition
Constant Voltage Edition



Color · Efficiency

High Efficiency Series COB



High Efficiency Series COB Standard Edition

Application:
Widely used for high end commercial lighting such as hotels, museums, fashion chain stores and supermarkets; or household lighting

Product Advantages:

- ANSI standard, cross reference with international brands
- Ra > 80/90, light efficiency of 145lm/W, 165lm/W, 175lm/W
- Best option for commercial lighting, with 36V isolated power supply driver
- Compatible sizes, easy to install and uninstall

Product Feature:

- LM-80 Certified
- 3 years /30000H working life warranty
- Good chromatic consistency, chromatic aberration < 2SDCM

High Efficiency COB- Y Series

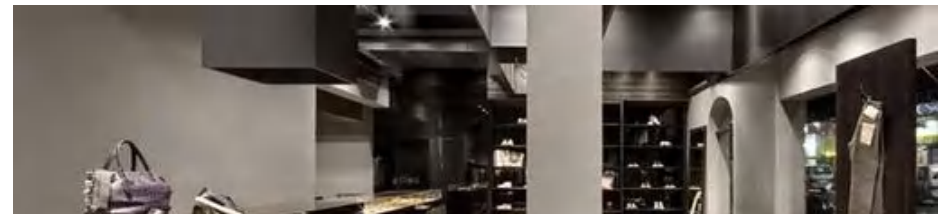
| Product Drawing | Product Model | Les (mm) | Power (W) | Typ Current (mA) | Max Current (mA) | Voltage (V) | CCT | Efficiency @ 3000K (lm/W) | Lumens (lm) |
|-----------------|---------------|----------|-----------|------------------|------------------|-------------|------|---------------------------|-------------|
| | 1201-Y | Φ 7.5 | 5 | 130 | 200 | 36 | ≥ 80 | 142 | 664 |
| | 1202-Y | Φ 7.5 | 7 | 200 | 400 | 36 | ≥ 90 | 120 | 561 |
| | 1203-Y | Φ 11 | 12 | 350 | 600 | 36 | ≥ 80 | 142 | 1022 |
| | 1204-Y | Φ 11 | 15 | 400 | 800 | 36 | ≥ 90 | 120 | 864 |
| | 1205-Y | Φ 17 | 20 | 550 | 1000 | 36 | ≥ 80 | 145 | 1827 |
| | 1206-Y | Φ 17 | 25 | 700 | 1200 | 36 | ≥ 90 | 123 | 1549 |
| | 1207-Y | Φ 17 | 35 | 950 | 1600 | 36 | ≥ 80 | 145 | 2088 |
| | 1208-Y | Φ 17 | 35 | 950 | 1600 | 36 | ≥ 90 | 123 | 1771 |
| | 1206-Y | Φ 16 | 25 | 700 | 1200 | 36 | ≥ 80 | 150 | 2970 |
| | 1207-Y | Φ 16 | 30 | 800 | 1400 | 36 | ≥ 90 | 130 | 2574 |
| | 1208-Y | Φ 16 | 35 | 950 | 1600 | 36 | ≥ 80 | 150 | 3780 |
| | 1208-Y | Φ 16 | 35 | 950 | 1600 | 36 | ≥ 90 | 128 | 3225 |
| | 1206-Y | Φ 16 | 25 | 700 | 1200 | 36 | ≥ 80 | 150 | 5130 |
| | 1207-Y | Φ 16 | 30 | 800 | 1400 | 36 | ≥ 90 | 128 | 4411 |
| | 1208-Y | Φ 16 | 35 | 950 | 1600 | 36 | ≥ 80 | 150 | 4320 |
| | 1208-Y | Φ 16 | 35 | 950 | 1600 | 36 | ≥ 90 | 128 | 3686 |
| | 1208-Y | Φ 16 | 35 | 950 | 1600 | 36 | ≥ 80 | 150 | 5130 |
| | 1208-Y | Φ 16 | 35 | 950 | 1600 | 36 | ≥ 90 | 127 | 4343 |

High Efficiency COB- K Series

| Product Drawing | Product Model | Les (mm) | Power (W) | Typ Current (mA) | Max Current (mA) | Voltage (V) | CCT | Efficiency @ 3000K (lm/W) | Lumens (lm) |
|-----------------|---------------|----------|-----------|------------------|------------------|-------------|------|---------------------------|-------------|
| | 1201-K | Φ 7.5 | 3 | 90 | 230 | 36 | ≥ 80 | 161 | 521 |
| | 1202-K | Φ 7.5 | 6 | 180 | 460 | 36 | ≥ 90 | 137 | 443 |
| | 1203-K | Φ 11 | 9 | 270 | 690 | 36 | ≥ 80 | 161 | 1043 |
| | 1204-K | Φ 11 | 12 | 360 | 920 | 36 | ≥ 90 | 137 | 887 |
| | 1205-K | Φ 17 | 15 | 450 | 1150 | 36 | ≥ 80 | 161 | 1564 |
| | 1206-K | Φ 17 | 18 | 540 | 1380 | 36 | ≥ 90 | 137 | 1331 |
| | 1208-K | Φ 17 | 24 | 720 | 1840 | 36 | ≥ 80 | 161 | 2086 |
| | 1210-K | Φ 17 | 30 | 900 | 2300 | 36 | ≥ 90 | 137 | 1775 |
| | 1311-K | Φ 17 | 24 | 600 | 2530 | 36 | ≥ 80 | 165 | 2673 |
| | 1311-K | Φ 17 | 24 | 600 | 2530 | 36 | ≥ 90 | 140 | 2268 |
| | 1206-K | Φ 17 | 18 | 540 | 1380 | 36 | ≥ 80 | 166 | 3227 |
| | 1208-K | Φ 17 | 24 | 720 | 1840 | 36 | ≥ 90 | 141 | 2741 |
| | 1210-K | Φ 17 | 30 | 900 | 2300 | 36 | ≥ 80 | 166 | 4302 |
| | 1311-K | Φ 17 | 24 | 600 | 2530 | 36 | ≥ 90 | 141 | 3654 |
| | 1311-K | Φ 17 | 24 | 600 | 2530 | 36 | ≥ 80 | 162 | 5248 |
| | 1311-K | Φ 17 | 24 | 600 | 2530 | 36 | ≥ 90 | 138 | 4471 |
| | 1311-K | Φ 17 | 24 | 600 | 2530 | 36 | ≥ 80 | 175 | 3780 |
| | 1311-K | Φ 17 | 24 | 600 | 2530 | 36 | ≥ 90 | 150 | 3240 |

High Efficiency COB- S Series

| Product Drawing | Product Model | Les (mm) | Power (W) | Typ Current (mA) | Max Current (mA) | Voltage (V) | CCT | Efficiency @ 3000K (lm/W) | Lumens (lm) |
|-----------------|---------------|----------|-----------|------------------|------------------|-------------|------|---------------------------|-------------|
| | 1202-S | Φ 8 | 6 | 180 | 460 | 36 | ≥ 80 | 170 | 1101 |
| | 1204-S | Φ 11 | 12 | 360 | 920 | 36 | ≥ 90 | 144 | 933 |
| | 1206-S | Φ 17 | 18 | 540 | 1380 | 36 | ≥ 80 | 170 | 2203 |
| | 1208-S | Φ 17 | 24 | 720 | 1840 | 36 | ≥ 90 | 144 | 1866 |
| | 1210-S | Φ 17 | 30 | 900 | 2300 | 36 | ≥ 80 | 175 | 3402 |
| | 1214-S | Φ 21 | 42 | 1260 | 3220 | 36 | ≥ 90 | 149 | 2896 |
| | 1206-S | Φ 17 | 18 | 540 | 1380 | 36 | ≥ 80 | 175 | 4536 |
| | 1210-S | Φ 17 | 30 | 900 | 2300 | 36 | ≥ 90 | 149 | 3862 |
| | 1214-S | Φ 21 | 42 | 1260 | 3220 | 36 | ≥ 80 | 170 | 5508 |
| | 1214-S | Φ 21 | 42 | 1260 | 3220 | 36 | ≥ 90 | 144 | 4665 |
| | 1214-S | Φ 21 | 42 | 1260 | 3220 | 36 | ≥ 80 | 175 | 7938 |
| | 1214-S | Φ 21 | 42 | 1260 | 3220 | 36 | ≥ 90 | 149 | 6758 |



High Efficiency Series COB



High Efficiency Series COB Ultimate Edition

Application:

Widely used for high end commercial lighting such as hotels, museums, fashion chain stores and supermarkets; or household lighting

Product Advantages:

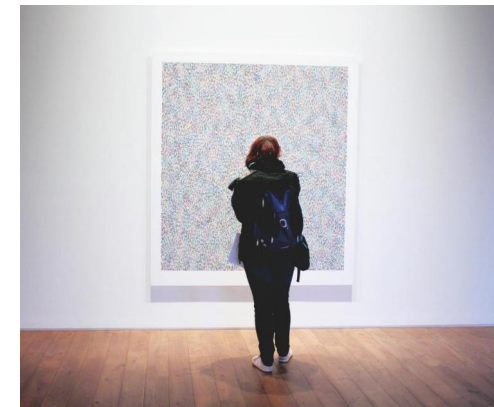
- ANSI standard, cross reference with international brands
- Ra>90, light efficiency of 190lm/W
- Best option for commercial lighting, with 36V isolated power supply driver
- Compatible sizes, easy to install and uninstall

Product Feature:

- With special phosphor technology, supreme high light efficiency
- Good chromatic consistency, chromatic aberration <2SDCM

High Efficiency COB- Ultimate Edition

| Product Drawing | Product Model | Les (mm) | Power (W) | Typ Current (mA) | Max Current (mA) | Voltage (V) | CCT | Ra | Efficiency (lm/W) | Lumens (lm) | |
|-----------------|---------------|----------|-----------|------------------|------------------|-------------|------|-----|-------------------|-------------|------|
| | 1202-K90 | Φ7.5 | 4 | 120 | 180 | 36 | 2700 | ≥90 | 173 | 692 | |
| | | | | | | | | | 3000 | 182 | 728 |
| | | | | | | | | | 4000 | 191 | 764 |
| | 1205-K90 | Φ10.8 | 10 | 300 | 450 | 36 | 2700 | ≥90 | 173 | 1730 | |
| | | | | | | | | | 3000 | 182 | 1820 |
| | | | | | | | | | 4000 | 191 | 1910 |
| | 1209-K90 | Φ12.3 | 18 | 480 | 720 | 36 | 2700 | ≥90 | 176 | 3168 | |
| | | | | | | | | | 3000 | 185 | 3330 |
| | | | | | | | | | 4000 | 194 | 3492 |
| | 1210-K90 | Φ16.8 | 20 | 600 | 900 | 36 | 2700 | ≥90 | 176 | 3520 | |
| | | | | | | | | | 3000 | 185 | 3700 |
| | | | | | | | | | 4000 | 194 | 3880 |
| | 1313-K90 | Φ16.8 | 28 | 780 | 1170 | 36 | 2700 | ≥90 | 176 | 4928 | |
| | | | | | | | | | 3000 | 185 | 5180 |
| | | | | | | | | | 4000 | 194 | 5432 |



High Efficiency Series COB



High Efficiency Series COB High density Edition

Application:
Widely used for high end commercial lighting such as hotels, museums, fashion chain stores and supermarkets; or household lighting

- Product Advantages:**
- smaller sizes, LES 3.5mm/4.6mm/9mm optional, best option for small spot lights
 - Ra ≥ 90, R9 > 60
 - Applicable with opticals < 10°, best option for smaller beam angle or focus-adjustable lights
 - Ultra-high power density, high central light intensity, good for emphasis lighting

- Product Feature:**
- LM-80 Certified
 - 3 years /30000H working life warranty
 - Good chromatic consistency, chromatic aberration < 2SDCM

| Product Drawing | Product Model | Les (mm) | Power (W) | Typ Current (mA) | Max Current (mA) | Voltage (V) | CCT | Ra | Efficiency (lm/W) | Lumens (lm) |
|-----------------|---------------|----------|-----------|------------------|------------------|-------------|------|-----|-------------------|-------------|
| | 1201-HD | Φ3.5 | 4 | 120 | 200 | 36 | 3000 | ≥90 | 92 | 397 |
| | | | | | | | 4000 | ≥90 | 96 | 414 |
| | | | | | | | 5700 | ≥90 | 96 | 414 |
| | 1202-HD | Φ4.6 | 9 | 250 | 350 | 36 | 3000 | ≥90 | 92 | 828 |
| | | | | | | | 4000 | ≥90 | 96 | 864 |
| | | | | | | | 5700 | ≥90 | 96 | 864 |
| | 1204-HD | Φ6 | 15 | 400 | 750 | 36 | 3000 | ≥90 | 105 | 1512 |
| | | | | | | | 4000 | ≥90 | 115 | 1656 |
| | | | | | | | 5700 | ≥90 | 115 | 1656 |
| | 1206-HD | Φ9 | 25 | 700 | 1050 | 36 | 3000 | ≥90 | 110 | 2772 |
| | | | | | | | 4000 | ≥90 | 120 | 3024 |
| | | | | | | | 5700 | ≥90 | 120 | 3024 |
| | 1208-HD | Φ9 | 30 | 800 | 1440 | 36 | 3000 | ≥90 | 110 | 3168 |
| | | | | | | | 4000 | ≥90 | 120 | 3456 |
| | | | | | | | 5700 | ≥90 | 120 | 3456 |

High Efficiency Series COB Constant Voltage Edition

Application:
Suitable for hotels, clubs, museums, clothing brand stores, supermarket chains, high-end home lighting and other places.

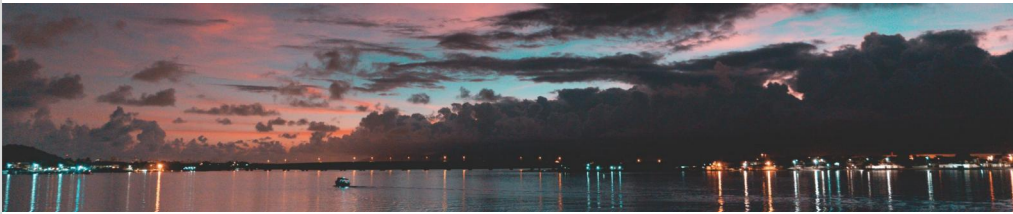
- Product advantages:**
- Constant voltage input, automatic constant current, safer and more convenient
 - Suitable for 24V and 48V constant voltage drive power supply
 - CRI > 90, light efficiency greater than 130lm/W
 - A single power supply drives multiple groups of parallel lamps to achieve group control

- Features:**
- The entire series has passed LM-80 certification
 - Warranty for 3 years or 30000H
 - Good light color consistency, color difference < 2SDCM

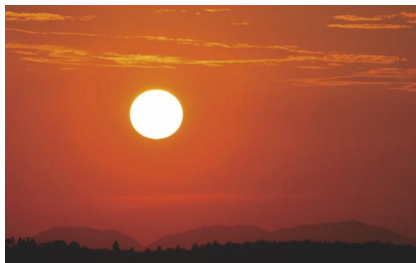
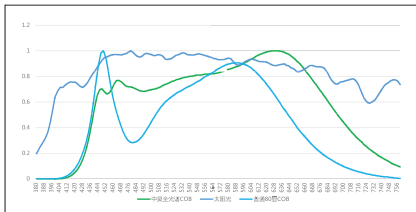
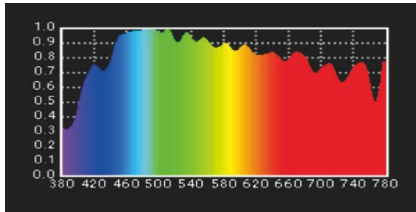


| Product Drawing | Product Model | Les (mm) | Power (W) | Voltage min(V) | Voltage max(V) | CCT | Ra | Efficiency (lm/W) | Lumens (lm) |
|-----------------|---------------|----------|-----------|----------------|----------------|------|-----|-------------------|-------------|
| | 0704-7WHC | Φ8.0 | 7 | 24 | 27 | 2700 | ≥90 | 105 | 735 |
| | | | | | | 3000 | ≥90 | 110 | 770 |
| | | | | | | 4000 | ≥90 | 115 | 805 |
| | 0704-9WHC | Φ8.0 | 9 | 24 | 27 | 2700 | ≥90 | 100 | 900 |
| | | | | | | 3000 | ≥90 | 105 | 945 |
| | | | | | | 4000 | ≥90 | 110 | 990 |
| | 0707-HC | Φ11.0 | 12 | 24 | 27 | 2700 | ≥90 | 115 | 1380 |
| | | | | | | 3000 | ≥90 | 120 | 1440 |
| | | | | | | 4000 | ≥90 | 125 | 1500 |
| | 0708-HC | Φ11.0 | 15 | 24 | 27 | 2700 | ≥90 | 115 | 1725 |
| | | | | | | 3000 | ≥90 | 120 | 1800 |
| | | | | | | 4000 | ≥90 | 125 | 1875 |
| | 1506-HC | Φ17 | 18 | 48 | 54 | 2700 | ≥90 | 120 | 2160 |
| | | | | | | 3000 | ≥90 | 125 | 2250 |
| | | | | | | 4000 | ≥90 | 130 | 2340 |
| | 1508-HC | Φ17 | 24 | 48 | 54 | 2700 | ≥90 | 120 | 2880 |
| | | | | | | 3000 | ≥90 | 125 | 3000 |
| | | | | | | 4000 | ≥90 | 130 | 3120 |
| | 1510-HC | Φ17 | 30 | 48 | 54 | 2700 | ≥90 | 120 | 3600 |
| | | | | | | 3000 | ≥90 | 125 | 3750 |
| | | | | | | 4000 | ≥90 | 130 | 3900 |

Full Spectrum Series COB



The spectrum of sunlight



Full Spectrum Series COB

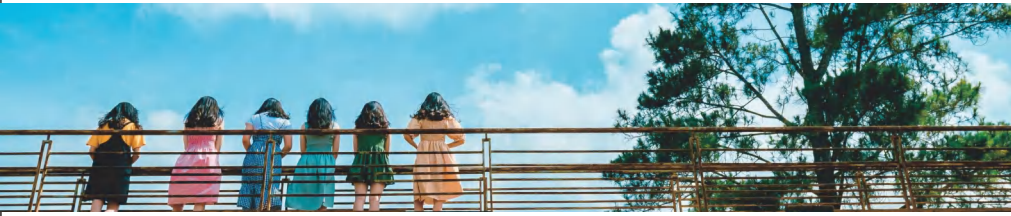
Standard Edition
Ultimate Edition

- Ra>97, Rf>95, Rg102
- R1~R15>90, R9>90, perfect reappearance of natural daylight.
- Healthy and comfortable, best option of commercial lighting such as hotel, club museum etc. or high-end household lighting.
- RG0, no blue ray harm



Color · Nature

Full Spectrum Series COB

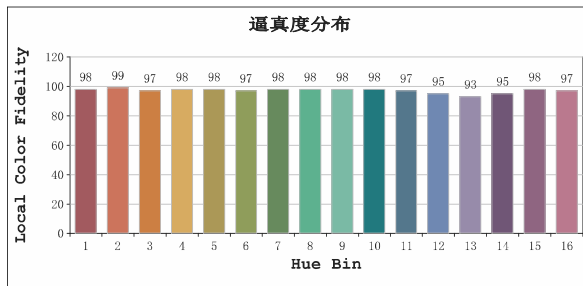
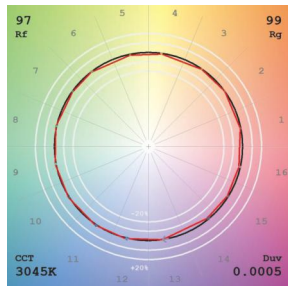
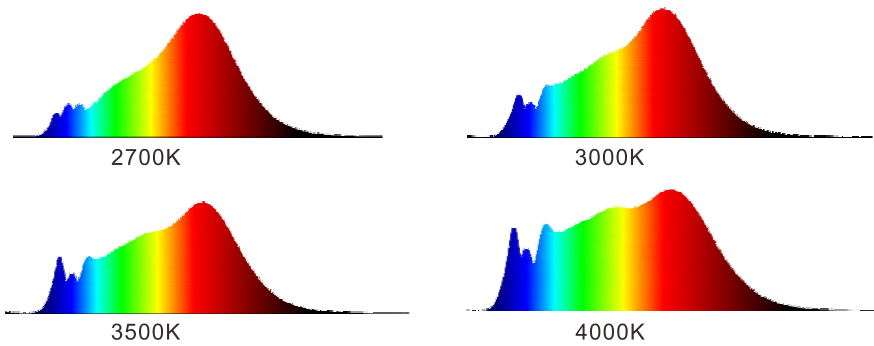


Full Spectrum Series COB

Application:
Suitable for hotels, clubs, museums, clothing brand stores, Supermarket chains and high-end home lighting and other places

- Product advantages:**
- Using simulated solar spectrum formula, the most advanced international color evaluation system standard, the light color is white or red
 - Color fidelity Rf: 95, color gamut saturation Rg: 102, National invention patent product, leading science
 - High-style natural presentation, the basement can also have sunlight, CRI>97 light>105lm/W, 120lm/W, two-level are available
 - Low blue light, blue light peak is less than 0.3

- Features:**
- The entire series has passed LM-80 certification
 - Ra-R15 are >90, R9>90 healthy, comfortable, natural
 - Warranty for 3 years or 30000H
 - Good light color consistency, color difference <2SDCM



Full Spectrum Series COB- Standard Edition

| Product Drawing | Product Model | Les (mm) | Power (W) | Typ Current (mA) | Max Current (mA) | Voltage (V) | CCT | Ra | Efficiency (lm/W) | Lumens (lm) |
|-----------------|---------------|----------|-----------|------------------|------------------|-------------|------|----|-------------------|-------------|
| | 1202-G4 | Φ6 | 6 | 180 | 360 | 36 | 2700 | 97 | 95 | 570 |
| | | | | | | | 3000 | | 100 | 600 |
| | | | | | | | 4000 | | 105 | 630 |
| | 1203-G4 | Φ7.5 | 9 | 270 | 540 | 36 | 2700 | 97 | 95 | 855 |
| | | | | | | | 3000 | | 100 | 900 |
| | | | | | | | 4000 | | 105 | 945 |
| | 1204-G4 | Φ7.5 | 12 | 360 | 720 | 36 | 2700 | 97 | 95 | 1140 |
| | | | | | | | 3000 | | 100 | 1200 |
| | | | | | | | 4000 | | 105 | 1260 |
| | 1205-G4 | Φ11 | 15 | 450 | 900 | 36 | 2700 | 97 | 95 | 1140 |
| | | | | | | | 3000 | | 100 | 1200 |
| | | | | | | | 4000 | | 105 | 1260 |
| | 1206-G4 | Φ11 | 18 | 540 | 1080 | 36 | 2700 | 97 | 95 | 1425 |
| | | | | | | | 3000 | | 100 | 1500 |
| | | | | | | | 4000 | | 105 | 1575 |
| | 1208-G4 | Φ17 | 24 | 720 | 1440 | 36 | 2700 | 97 | 100 | 1800 |
| | | | | | | | 3000 | | 105 | 1890 |
| | | | | | | | 4000 | | 110 | 1980 |
| | 1210-G4 | Φ17 | 30 | 900 | 1800 | 36 | 2700 | 97 | 100 | 2400 |
| | | | | | | | 3000 | | 105 | 2520 |
| | | | | | | | 4000 | | 110 | 2640 |

Full Spectrum Series COB- Ultimate Edition

| Product Drawing | Product Model | Les (mm) | Power (W) | Typ Current (mA) | Max Current (mA) | Voltage (V) | CCT | Ra | Efficiency (lm/W) | Lumens (lm) |
|-----------------|---------------|----------|-----------|------------------|------------------|-------------|-------|----|-------------------|-------------|
| | 1202-SG4 | Φ7.5 | 6 | 180 | 460 | 36 | 2700K | 97 | 110 | 660 |
| | | | | | | | 3000K | | 115 | 690 |
| | | | | | | | 4000K | | 120 | 720 |
| | 1203-SG4 | Φ11 | 9 | 270 | 690 | 36 | 2700K | 97 | 110 | 990 |
| | | | | | | | 3000K | | 115 | 1035 |
| | | | | | | | 4000K | | 120 | 1080 |
| | 1204-SG4 | Φ11 | 12 | 360 | 920 | 36 | 2700K | 97 | 110 | 1320 |
| | | | | | | | 3000K | | 115 | 1380 |
| | | | | | | | 4000K | | 120 | 1440 |
| | 1206-SG4 | Φ17 | 18 | 540 | 1380 | 36 | 2700K | 97 | 115 | 2070 |
| | | | | | | | 3000K | | 120 | 2160 |
| | | | | | | | 4000K | | 125 | 2250 |
| | 1208-SG4 | Φ17 | 24 | 720 | 1840 | 36 | 2700K | 97 | 115 | 2760 |
| | | | | | | | 3000K | | 120 | 2880 |
| | | | | | | | 4000K | | 125 | 3000 |
| | 1210-SG4 | Φ17 | 30 | 900 | 2300 | 36 | 2700K | 97 | 115 | 3450 |
| | | | | | | | 3000K | | 120 | 3600 |
| | | | | | | | 4000K | | 125 | 3750 |

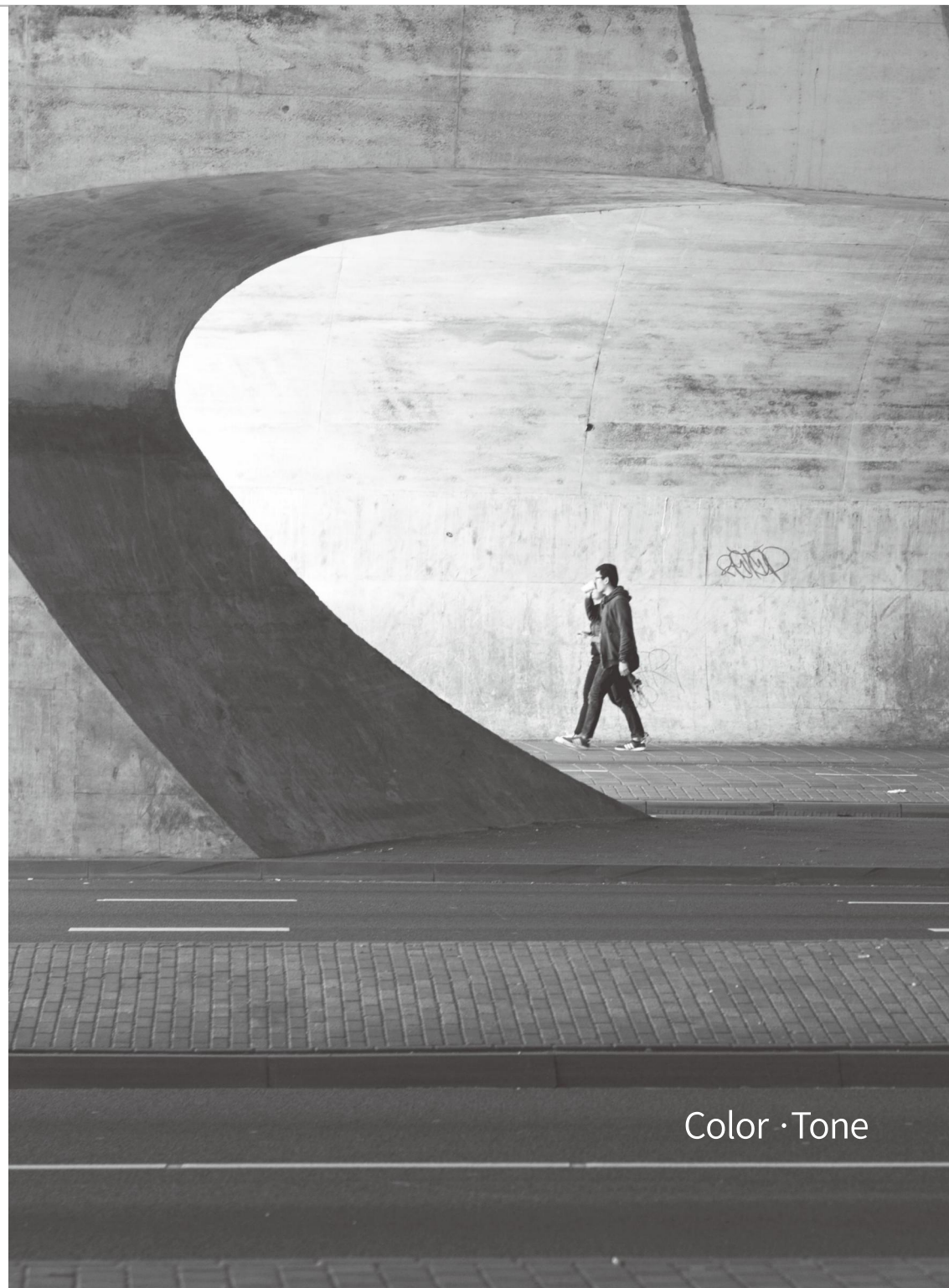
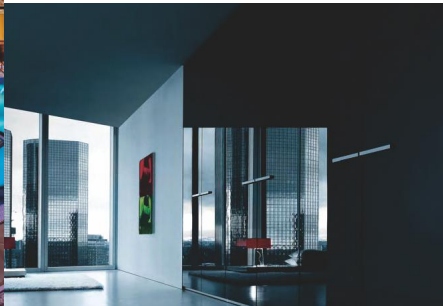
CCT Tunable Series COB



CCT Tunable Series COB

Standard Edition
Constant voltage CCT tunable COB
Dim to Warm COB

- Color temperature ranging from 2700K-6000K
- Ra80/90/95
- Power ranging from 4W-80W
- Precise phosphor coating technology and sedimentation process
- uniform distribution, color spot perfectly fitting into black body trajectory



Color · Tone



CCT Tunable Series COB

Standard Edition

Application:

Widely used for household lighting, and commercial lighting for clubs and other places

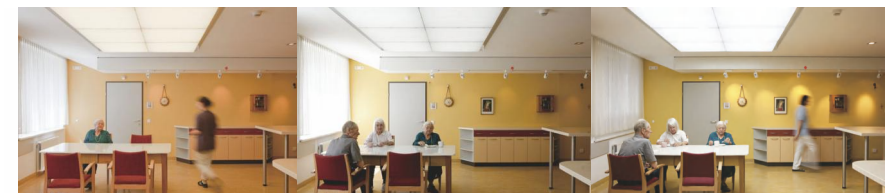
Product advantages:

- Uniform distribution, color spot perfectly fitting into black body trajectory, best option for intelligent lighting
- Universal size, and provide total solution of intelligent remote control and driver.
- Ra80/90/95 Lumens efficiency>145lm/W
- Uniform color distribution, soft changing of color temperature and light.

Features:

- COB can be adjusted from warm white to cold white
- Color temperature ranging from 2700K-6000K
- Power ranging from 4W-80W
- Best option for intelligent lighting

| Product Drawing | Product Model | Les(mm) | Power (W) | Typ Current (mA) | Max Current (mA) | Voltage (V) | CCT | Ra | Efficiency (lm/W) |
|-----------------|---------------|---------|-----------|------------------|------------------|-------------|-------|-----|-------------------|
| | 1202-7 | Φ8 | 6 | 160 | 400 | 36 | 2700K | ≥80 | 125 |
| | | | 6 | 160 | 400 | 36 | 6000K | ≥80 | 145 |
| | | | 6 | 160 | 400 | 36 | 2700K | ≥90 | 110 |
| | | | 6 | 160 | 400 | 36 | 6000K | ≥90 | 130 |
| | | | 6 | 160 | 400 | 36 | 2700K | ≥95 | 95 |
| | | | 6 | 160 | 400 | 36 | 6000K | ≥95 | 110 |
| | 1204-7 | Φ11 | 12 | 320 | 800 | 36 | 2700K | ≥80 | 125 |
| | | | 12 | 320 | 800 | 36 | 6000K | ≥80 | 145 |
| | | | 12 | 320 | 800 | 36 | 2700K | ≥90 | 110 |
| | | | 12 | 320 | 800 | 36 | 6000K | ≥90 | 130 |
| | | | 12 | 320 | 800 | 36 | 2700K | ≥95 | 95 |
| | | | 12 | 320 | 800 | 36 | 6000K | ≥95 | 110 |
| | 1206-7 | Φ14.5 | 18 | 480 | 1200 | 36 | 2700K | ≥80 | 130 |
| | | | 18 | 480 | 1200 | 36 | 6000K | ≥80 | 150 |
| | | | 18 | 480 | 1200 | 36 | 2700K | ≥90 | 115 |
| | | | 18 | 480 | 1200 | 36 | 6000K | ≥90 | 135 |
| | | | 18 | 480 | 1200 | 36 | 2700K | ≥95 | 100 |
| | | | 18 | 480 | 1200 | 36 | 6000K | ≥95 | 115 |
| | 1212-7 | Φ16.8 | 36 | 960 | 2400 | 36 | 2700K | ≥80 | 120 |
| | | | 36 | 960 | 2400 | 36 | 6000K | ≥80 | 140 |
| | | | 36 | 960 | 2400 | 36 | 2700K | ≥90 | 105 |
| | | | 36 | 960 | 2400 | 36 | 6000K | ≥90 | 125 |
| | | | 36 | 960 | 2400 | 36 | 2700K | ≥95 | 90 |
| | | | 36 | 960 | 2400 | 36 | 6000K | ≥95 | 105 |



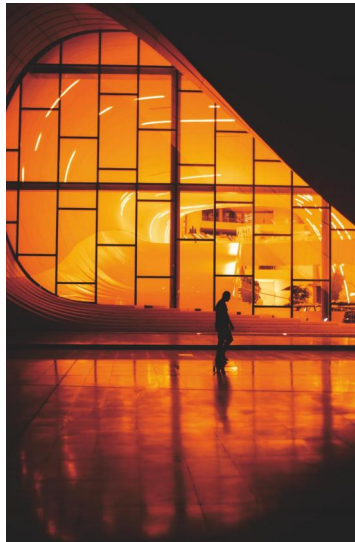


CCT Tunable Series COB
Constant voltage CCT tunable COB

Application:
Suitable for high-end homes, clubs and other lighting area

- Product Advantage:
- Constant Voltage input, automatic constant current, safer and more convenient
 - Compatible with 24V, 48V constant voltage driver
 - CCT tunable range from 2700K to 6000K, high light color consistency
 - Multiple parallel-connected fixtures can be driven by a single driver to achieve group control.

- Product Features:
- CCT adjustable from warm white to cool white
 - CCT tunable range from 2700K to 6000K
 - Power range covers from 7W to 30W
 - Best choice for intelligent lighting



| Product Drawing | Product Model | Les(mm) | Power (W) | Typ Voltage (V) | Max Voltage (V) | CCT | Ra | Efficiency (lm/W) |
|-----------------|---------------|---------|-----------|-----------------|-----------------|-------|-----|-------------------|
| | 0702-HK | Φ7.6 | 7 | 24 | 36 | 2700K | ≥90 | 80 |
| | | | 7 | 24 | 36 | 6000K | ≥90 | 98 |
| | 0704-HK | Φ10.5 | 12 | 24 | 36 | 2700K | ≥90 | 86 |
| | | | 12 | 24 | 36 | 6000K | ≥90 | 102 |
| | 1505-HK | Φ17 | 24 | 48 | 60 | 2700K | ≥90 | 102 |
| | | | 24 | 48 | 60 | 6000K | ≥90 | 120 |
| | 1507-HK | Φ17 | 30 | 48 | 60 | 2700K | ≥90 | 98 |
| | | | 30 | 48 | 60 | 6000K | ≥90 | 108 |



CCT Tunable Series COB



CCT Tunable Series COB

Dim to Warm COB

Application:
Widely used for commercial lighting for hotels and guesthouses etc.

Product Advantages:


- Simulation of traditional halogen lamp luminescence, dimming and CCT tuning at the same time
- $Ra \geq 90$, comfortable color point, high consistency, good dimming consistency
- Color temperature ranging from 1800K-3000K, 2200K-4000K
- Compatible size, easy to install and uninstall

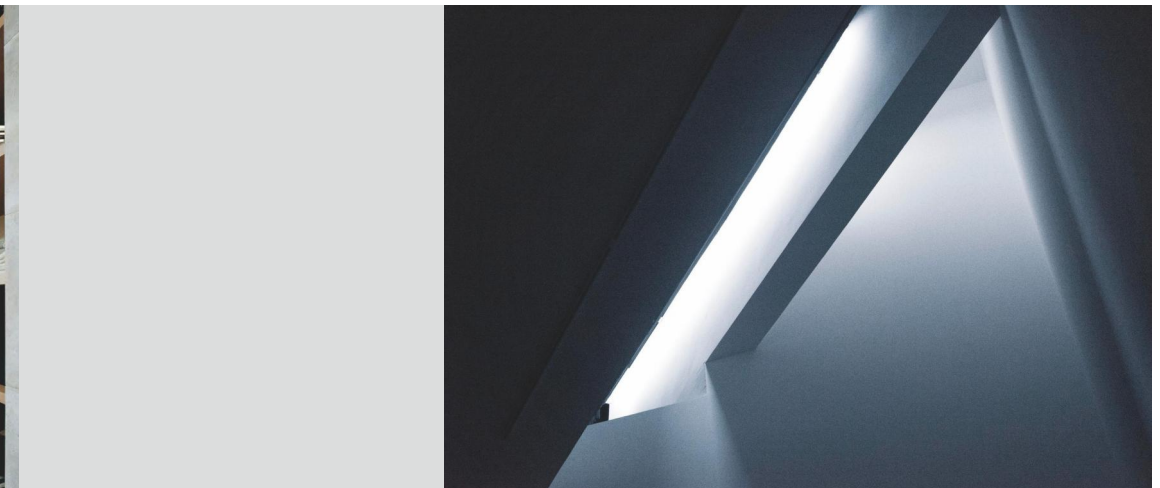
Product Feature:

- Single channel adjustment, color temperature range of 1800K-3000K and 2200K-4000K optional
- Power ranging from 10W-20W
- Good color consistency, Chromatic aberration $< 3SDCM$

CCT Tunable Series COB

Dim to Warm COB

| Product Drawing | Product Model | Les(mm) | CCT | Ra | Power (W) | Typ Current (mA) | Max Current (mA) | Voltage (V) | Efficiency (lm/W) |
|---|---------------|---------|-------------|-----------|-----------|------------------|------------------|-------------|-------------------|
|  | 1203-DK | Φ11 | 2200K-4000K | ≥ 90 | 10 | 300 | 350 | 36 | 120(4000K) |
| | | | 1800K-3000K | ≥ 90 | 10 | 300 | 350 | 36 | 110(3000K) |
|  | 1206-DK | Φ16 | 2200K-4000K | ≥ 90 | 20 | 600 | 700 | 36 | 120(4000K) |
| | | | 1800K-3000K | ≥ 90 | 20 | 600 | 700 | 36 | 110(3000K) |



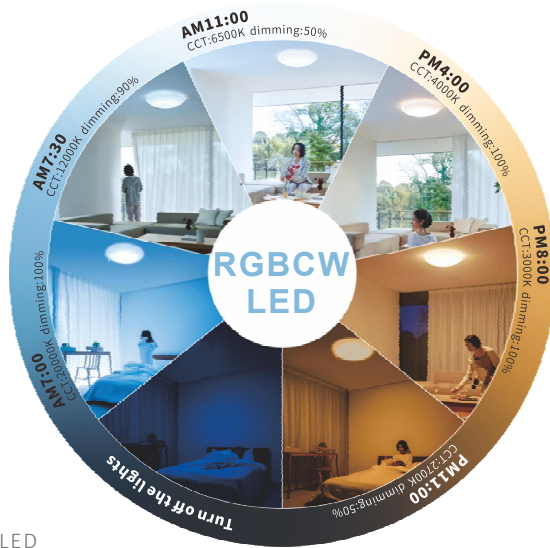
RGBCW Series



CCT Tunable & Dimmable

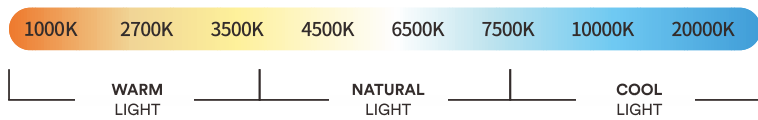
- 1. From candlelight to clear sky light, the reappearance of natural light
- On the basis of high CRI, the tones can be adjusted (red, green)
- Colorful lighting atmosphere: all color gamut adjustable, countless combination of color;
- Rhythm lighting: completely biorhythm light application (simulation lighting environment from sunrise to sunset);
- Wide range from CCT 1000K to 20000K, color point fitting black body trajectory.

0



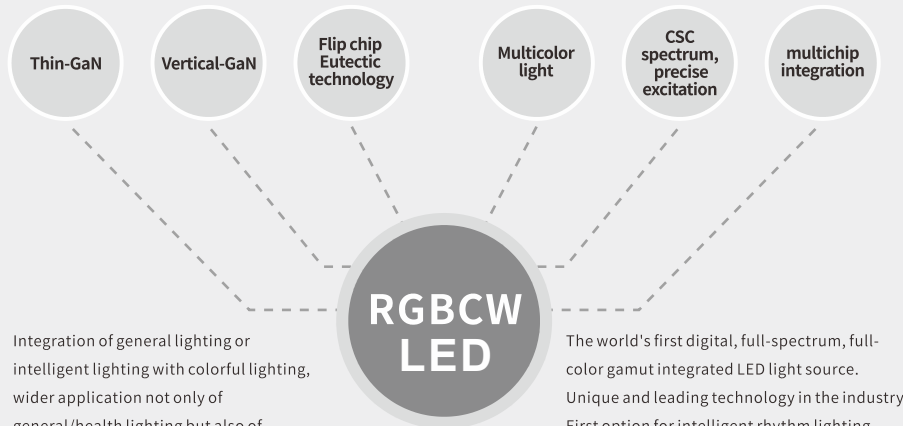
Color · Space

Intelligent RGBCW LED



Color · Space

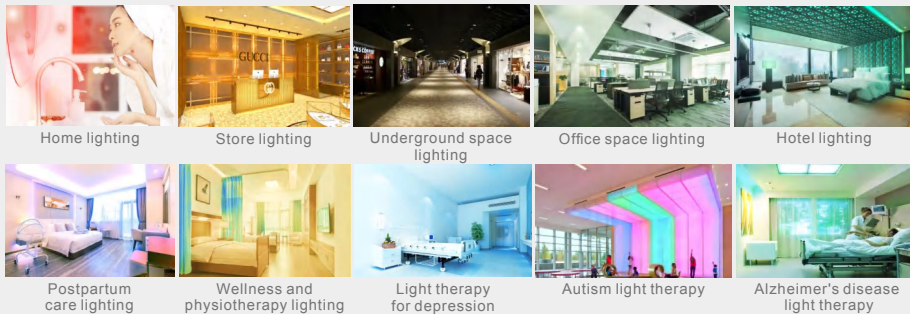
RGBCW Series



Integration of general lighting or intelligent lighting with colorful lighting, wider application not only of general/health lighting but also of audio/video entertainment.

The world's first digital, full-spectrum, full-color gamut integrated LED light source. Unique and leading technology in the industry. First option for intelligent rhythm lighting

Every color you can imagine !



Home lighting

Store lighting

Underground space lighting

Office space lighting

Hotel lighting

Postpartum care lighting

Wellness and physiotherapy lighting

Light therapy for depression

Autism light therapy

Alzheimer's disease light therapy

RGBCW Series COB

| Product Drawing | Product Model | Les(mm) | CCT | Ra | Power (W) | Typ Current (mA) | Max Current (mA) | Voltage (V) | Efficiency (lm/W) |
|-----------------|-------------------|---------|---------|-----|-----------|------------------|------------------|-------------|-------------------|
| | NCW1611A-30W-LSH | Φ11 | R | / | 4 | 160 | 200 | 24 | / |
| | | | G | / | 7 | 280 | 400 | 24 | / |
| | | | B | / | 7 | 280 | 400 | 24 | / |
| | | | C:6000K | ≥90 | 7 | 280 | 400 | 24 | 105 |
| | | | W:2700K | ≥90 | 7 | 280 | 400 | 24 | 90 |
| | NCW1814B-60W-LSH | Φ14 | R | / | 12 | 320 | 400 | 36 | / |
| | | | G | / | 12 | 320 | 400 | 36 | / |
| | | | B | / | 12 | 320 | 400 | 36 | / |
| | | | C:6000K | ≥90 | 12 | 320 | 400 | 36 | 100 |
| | | | W:2700K | ≥90 | 12 | 320 | 400 | 36 | 85 |
| | NCW1916B-50W-LSH | Φ16 | R | / | 6 | 160 | 200 | 36 | / |
| | | | G | / | 12 | 320 | 400 | 36 | / |
| | | | B | / | 12 | 320 | 400 | 36 | / |
| | | | C:6000K | ≥90 | 12 | 320 | 400 | 36 | 100 |
| | | | W:2700K | ≥90 | 12 | 320 | 400 | 36 | 85 |
| | NCW2320B-100W-LSH | Φ20 | R | / | 12 | 320 | 400 | 36 | / |
| | | | G | / | 12 | 320 | 400 | 36 | / |
| | | | B | / | 12 | 320 | 400 | 36 | / |
| | | | C:6000K | ≥90 | 25 | 700 | 900 | 36 | 105 |
| | | | W:2700K | ≥90 | 25 | 700 | 900 | 36 | 90 |

RGBCW Series Welding-free

| Product Drawing | Product Model | Les(mm) | CCT | Ra | Power (W) | Typ Current (mA) | Max Current (mA) | Voltage (V) | Efficiency (lm/W) |
|-----------------|------------------|---------|---------|-----|-----------|------------------|------------------|-------------|-------------------|
| | DCW1913A-30W-LSH | Φ13 | R | / | 4 | 160 | 200 | 24 | / |
| | | | G | / | 7 | 280 | 400 | 24 | / |
| | | | B | / | 7 | 280 | 400 | 24 | / |
| | | | C:6000K | ≥90 | 7 | 280 | 400 | 24 | 95 |
| | | | W:2700K | ≥90 | 7 | 280 | 400 | 24 | 75 |
| | DCW1916B-60W-LSH | Φ16 | R | / | 12 | 320 | 400 | 36 | / |
| | | | G | / | 12 | 320 | 400 | 36 | / |
| | | | B | / | 12 | 320 | 400 | 36 | / |
| | | | C:6000K | ≥90 | 12 | 320 | 400 | 36 | 95 |
| | | | W:2700K | ≥90 | 12 | 320 | 400 | 36 | 75 |

RGBCW Series DOB

| Product Drawing | Product Model | Les(mm) | CCT | Ra | Power (W) | Voltage AC (V) | Frequency (HZ) | Control | Efficiency (lm/W) |
|-----------------|------------------------|---------|---------|-----|-----------|----------------|----------------|----------------|-------------------|
| | SLEM7214A-RGBCW-50WH-E | Φ14 | R | / | 8 | 200~240 | 50/60 | Bluetooth Mesh | / |
| | | | G | / | 8 | | | | / |
| | | | B | / | 8 | | | | / |
| | | | C:6000K | ≥90 | 14 | | | | 105 |
| | | | W:2700K | ≥90 | 14 | | | | 90 |

Color·Space intelligent RGBCW LED

Application:
Widely used in smart home, phototherapy, commercial and entertainment lighting.

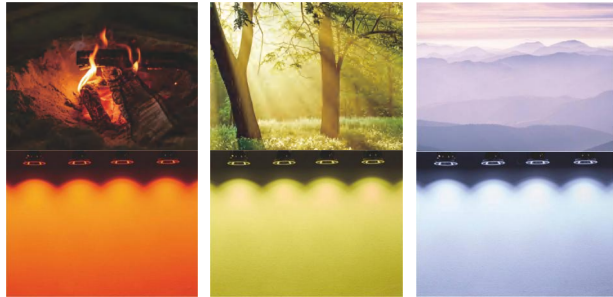
Product advantages:

- The first LED chip in the market that integrates daily lighting, audio-visual entertainment, and health lighting applications
- Using CSC spectrum accurate excitation, multi-chip integration technology etc., better lighting effect
- Integration of characteristics of RGB and CCT tunable LED, better option for the users on customization of colors
- Multi-channel adjustment, fully fit the blackbody radiation line, better satisfaction of users' needs of human rhythm lighting

Product Feature:

- From candlelight to clear sky light, the reappearance of natural light
- High CRI, color tone can be adjusted by preference (red, green)
- Colorful lighting atmosphere: countless combination of different colors
- Rhythm lighting: simulation of sunrise to sunset, completely biorhythm light application
- White light: adjustable color temperature 1000K-20000K, color point fitting black body trajectory

High-power Ceremic SMD Series



Evolved lights of Red, Green and Blue

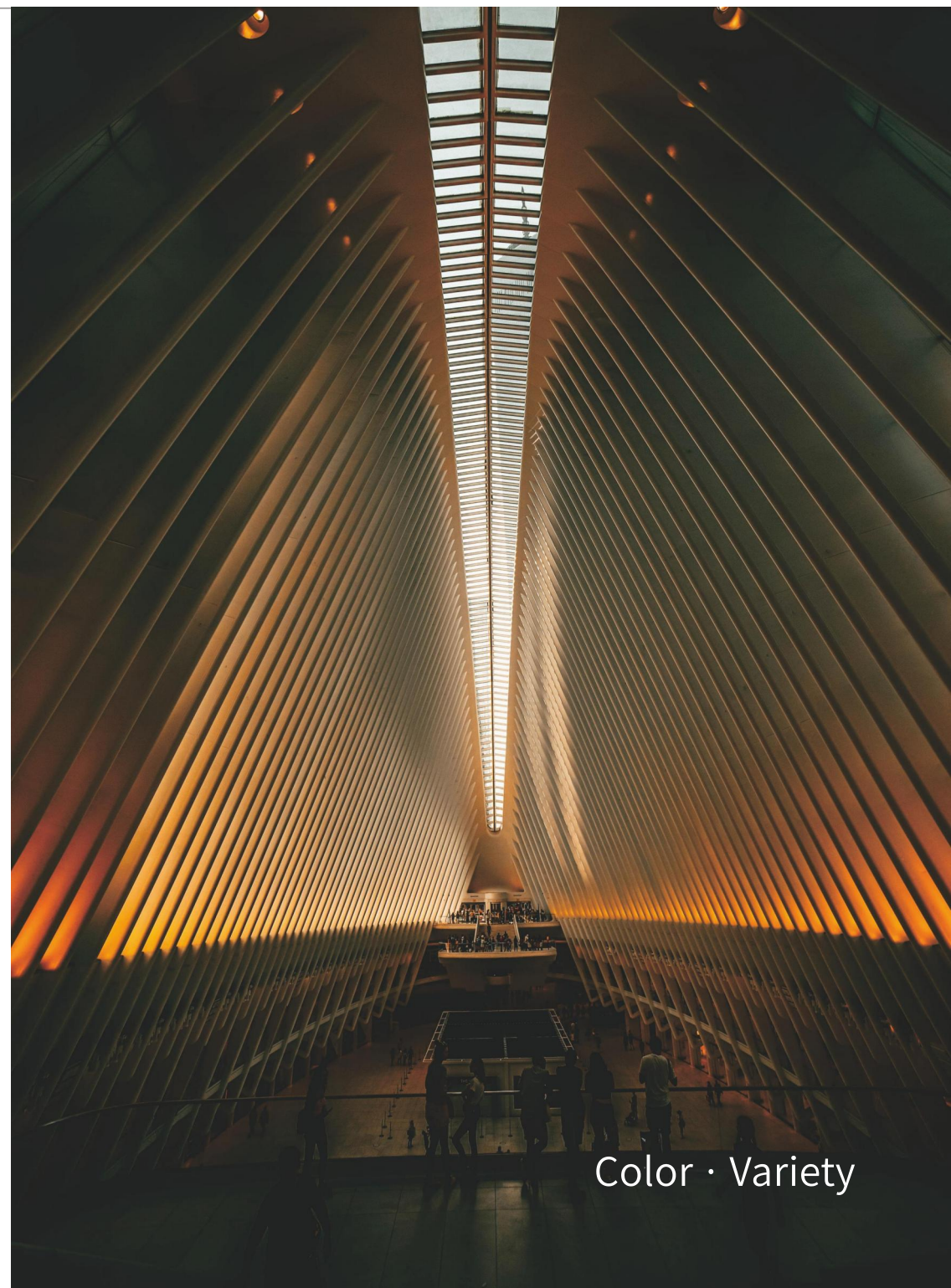
More full and rich color performance

Good option for outdoor landscape lighting or indoor stage lighting etc.

High-power Ceremic SMD Series

Single color SMD

Multi-color SMD



Color · Variety

High-power Ceremic SMD Series



High-power Ceremic SMD Series

Single color SMD

Application:

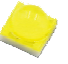


Suitable for indoor and outdoor lighting, land scape lighting and stage lighting etc.

Product Advantage:

- With ceramic thermo-electric separation and eutectic packaging technology to achieve lower thermal resistance, good stability and good air-tightness
- Specially customized high-efficiency chip and high reflection and transmission material, light efficiency is higher than market level.
- 60deg,90deg,120deg beam angle are available(only for 3535 ceramic SMD product)

Product Features:

- CRI60, CRI70, CRI80 and CRI90 are available of white LEDs.
- CCT tunable range from 2700K to 6000K
- Light efficiency can reach up to 150lm/W
- Power range 1W to 3W for 3535 SMD, 10W and 20W for 4040 SMD

| Product Drawing | Product Model | Power (W) | Max Power | Typ Current | Max Current (mA) | Voltage (V) | CCT/Dominant wavelength | Ra | Lumens (lm) |
|---|------------------|-----------|-----------|-------------|------------------|-------------|-------------------------|-----|-------------|
|  | CX353511EW*S01-P | 1 | 3 | 350 | 1000 | 3.2 | 2700-6500K | ≥95 | 70-130 |
| | CX353511EW*H01-P | 1 | 3 | 350 | 1000 | 3.2 | 2700-6500K | ≥90 | 80-130 |
| | CX353511EW*G01-P | 1 | 3 | 350 | 1000 | 3.2 | 2700-6500K | ≥80 | 90-150 |
| | CX353511EW*P01-P | 1 | 3 | 350 | 1000 | 3.2 | 2700-6500K | ≥70 | 100-160 |
| | CX353511FW*S01-P | 1 | 3 | 350 | 1000 | 3.2 | 2700-6500K | ≥95 | 90-140 |
| | CX353511FW*H01-P | 1 | 5 | 350 | 1500 | 3.2 | 2700-6500K | ≥90 | 110-160 |
| | CX353511FW*G01-P | 1 | 5 | 350 | 1500 | 3.2 | 2700-6500K | ≥80 | 120-180 |
| | CX353511FW*P01-P | 1 | 5 | 350 | 1500 | 3.2 | 2700-6500K | ≥70 | 130-200 |
|  | CX404011GW60001 | 10 | 10 | 3000 | 3000 | 3.8 | 6000-6500K | ≥60 | 600-700 |
| | CX404011HW60001 | 20 | 20 | 5000 | 5000 | 3.8 | 6000-6500K | ≥60 | 1000-1200 |
|  | CX505011GW60001 | 10 | 10 | 3000 | 3000 | 4.0 | 6000-6500K | ≥60 | 600-700 |
| | CX505011HW60001 | 20 | 20 | 6000 | 6000 | 4.0 | 6000-6500K | ≥60 | 1000-1200 |

High-power Ceremic SMD Series

Multi-color SMD

Application:

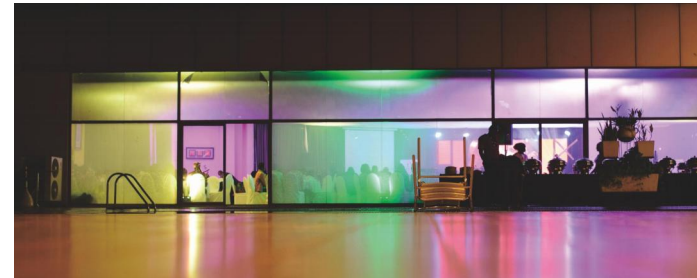
Suitable for indoor and outdoor lighting, land scape lighting and stage lighting etc.






Product Advantage:

- With ceramic thermo-electric separation and eutectic packaging technology to achieve lower thermal resistance, good stability and good air-tightness
- Specially customized high-efficiency chip and high reflection and transmission material, light efficiency is higher than market level.
- 60deg,90deg,120deg beam angle are available(only for 3535/5050 ceramic SMD product)

Product Features:

- 15W and 40W for 5060 SMD
- 3535 CCT tunable range 2700K-6000K



| Product Drawing | Product Model | Power (W) | Max Power | Typ Current | Max Current (mA) | Voltage (V) | CCT/Dominant wavelength | Ra | Lumens (lm) |
|---|---------------------|-----------|-----------|-------------|------------------|-------------|-------------------------|-----|-------------|
|  | CX353522BWLSH01-B | 2 | 3 | 350 | 500 | 6 | 2700K | ≥90 | 150 |
| | | 2 | 3 | 350 | 500 | 6 | 6000K | ≥90 | 200 |
| | CX353522BWLSS01-B | 2 | 3 | 350 | 500 | 6 | 2700K | ≥95 | 140 |
| | | 2 | 3 | 350 | 500 | 6 | 6000K | ≥95 | 160 |
|  | CX3535RGBW4W*G01 | 4 | 6 | 350 | 400 | 2.3 | 620-630nm | / | 30-50 |
| | | | | | | 3.2 | 520-530nm | / | 90-110 |
| | | | | | | 3.2 | 460-470nm | / | 20-30 |
| | | | | | | 3.2 | 3000K/4000K | ≥80 | 80-100 |
|  | CX5060RGBW15W60001 | 10 | 15 | 700 | 1200 | 2.4 | 620-630nm | / | 60-80 |
| | | | | | | 3.3 | 520-530nm | / | 150-170 |
| | | | | | | 3.3 | 460-470nm | / | 40-60 |
| | | | | | | 3.3 | 6000K | ≥60 | 200-220 |
|  | CX5060RGBW40W60001 | 15 | 40 | 1000 | 2500 | 2.6 | 620-630nm | / | 100-120 |
| | | | | | | 3.6 | 520-530nm | / | 230-250 |
| | | | | | | 3.6 | 450-455nm | / | 40-60 |
| | | | | | | 3.6 | 6000K | ≥60 | 260-280 |
|  | CX5050RGBW3WLSH01-B | 0.3 | 0.5 | 150 | 200 | 2.3 | 620-630nm | / | 10-20 |
| | | 0.5 | 0.6 | 150 | 200 | 3.2 | 520-530nm | / | 40-50 |
| | | 0.5 | 0.6 | 150 | 200 | 3.2 | 450-460nm | / | 0-10 |
| | | 0.5 | 1.2 | 150 | 200 | 3.2 | 2700K | ≥90 | 40-50 |
| | | 0.5 | 1.2 | 150 | 200 | 3.2 | 6000K | ≥90 | 50-60 |