

GK Screw Terminal Type, High Ripple Series

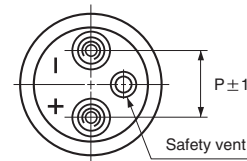
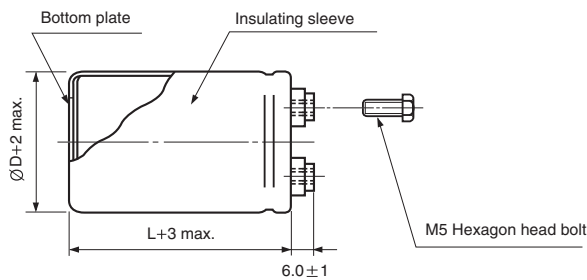
- Ideally suited for use as input and output filter capacitors in power supplies
- High ripple current capability
- Suited for smoothing circuits for general purpose inverters and control circuits for F.A. machines
- Designed for use as input filter capacitor for current U.P.S.
- Complied to the RoHS directive



Item	Characteristics	
Operating temperature range	-25 ~ +85°C	
Capacitance tolerance	±20% at 120Hz, 20°C	
Leakage current max.	$I=3\sqrt{CV}$ (μA) (after 5 minutes)	
Dissipation factor max.	0.25 max. at 120Hz, 20°C	
Load life (after application of the rated voltage for 2000 hours at 85°C)	Leakage current	Less than specified value
	Capacitance change	Within ±20% of initial value
	tanδ	Less than 300% of specified value
Shelf life (at 85°C)	After 1000 hours no load test, leakage current, capacitance and tanδ are same as load life value. The measurement shall be performed at 20°C by the KS C IEC 60384 - 4	

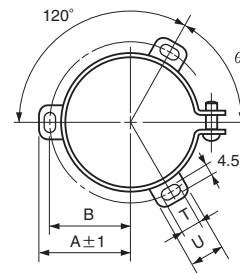
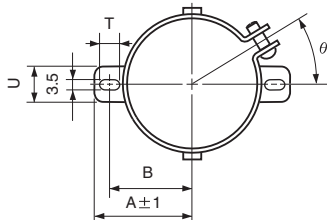
● DRAWING

Unit : mm



● TWO LEGS ANGLE

● THREE LEGS ANGLE



● TWO LEGS ANGLE SIZE TABLE

ØD	B	A	T	U	θ°	P
35	24	29	7	10	30	12.7
51	33.6	39.9	6	14	30	22
63.5	40.8	46.8	6	14	30	28.6

● THREE LEGS ANGLE SIZE TABLE

ØD	B	A	T	U	θ°	P
51	32.9	38.9	7	12	60	22
63.5	38.4	45.3	7	14	60	28.6
76.2	44.5	51.5	8	16	60	31.8
89	50.8	61	8	16	60	31.8

LARGE ALUMINUM ELECTROLYTIC CAPACITORS

GK series

● DIMENSIONS & MAXIMUM PERMISSIBLE RIPPLE CURRENT

WV Item μF	350		400		450		500	
	∅D×L (mm)	Ripple current (A rms) 85°C 120Hz	∅D×L (mm)	Ripple current (A rms) 85°C 120Hz	∅D×L (mm)	Ripple current (A rms) 85°C 120Hz	∅D×L (mm)	Ripple current (A rms) 85°C 120Hz
180					35×60	1.5		
220			35×50	1.7	35×60	1.7		
270	35×50	1.8	35×50	1.8	35×60	1.8		
330	35×50	2.0	35×60	2.1	35×80	2.3		
390	35×60	2.3	35×60	2.3	35×80	2.6		
470	35×60	2.4	35×80	2.7	35×100	3.0		
560	35×80	3.0	35×100	3.3	35×100	3.3		
680	35×80	3.3	35×100	3.6	35×120	3.9		
820	35×100	4.1	35×120	4.4	51×80	4.2		
1000	35×100	4.8	51×80	4.7	51×80	5.1	51×120	5.5
1200	51×80	5.1	51×80	5.1	51×100	5.6	63.5×100	5.9
1500	51×80	5.7	51×100	6.2	51×100	6.6	63.5×100	6.6
1800	51×100	6.8	51×100	7.4	51×110	7.2	63.5×120	7.8
2200	51×100	8.1	51×120	8.6	51×120	8.6	63.5×140	9.1
2700	51×120	9.6	63.5×100	9.5	51×140	10.1	76.2×120	9.8
3300	63.5×100	10.5	63.5×120	11.1	63.5×120	10.8	76.2×140	11.4
3900	63.5×120	12.2	63.5×130	12.9	63.5×130	12.5	76.2×160	13.2
4700	63.5×130	14.1	76.2×120	13.7	76.2×120	14.4	89×140	15.3
5600	76.2×120	15.0	76.2×130	15.8	76.2×130	16.4	89×160	17.7
6800	76.2×130	17.4	76.2×140	18.2	76.2×140	19.1	89×160	20.5
8200	76.2×150	19.8	76.2×160	20.9				
10000	76.2×160	23.1	89×140	23.1				

● FREQUENCY COEFFICIENT OF PERMISSIBLE RIPPLE CURRENT

Frequency	50Hz	120Hz	300Hz	1kHz	3kHz
Coefficient	0.8	1.0	1.1	1.3	1.4