

STRADELLA-8-HV-CSP-LN1

Beam for EN13201 M-class requirements with high poles or where road width is equal or less the pole height. Variant with improved creepage distance for high voltage circuit design.

TECHNICAL SPECIFICATIONS:

Dimensions	50.0 x 50.0 mm
Height	4.4 mm
Fastening	screw
ROHS compliant	yes ⓘ

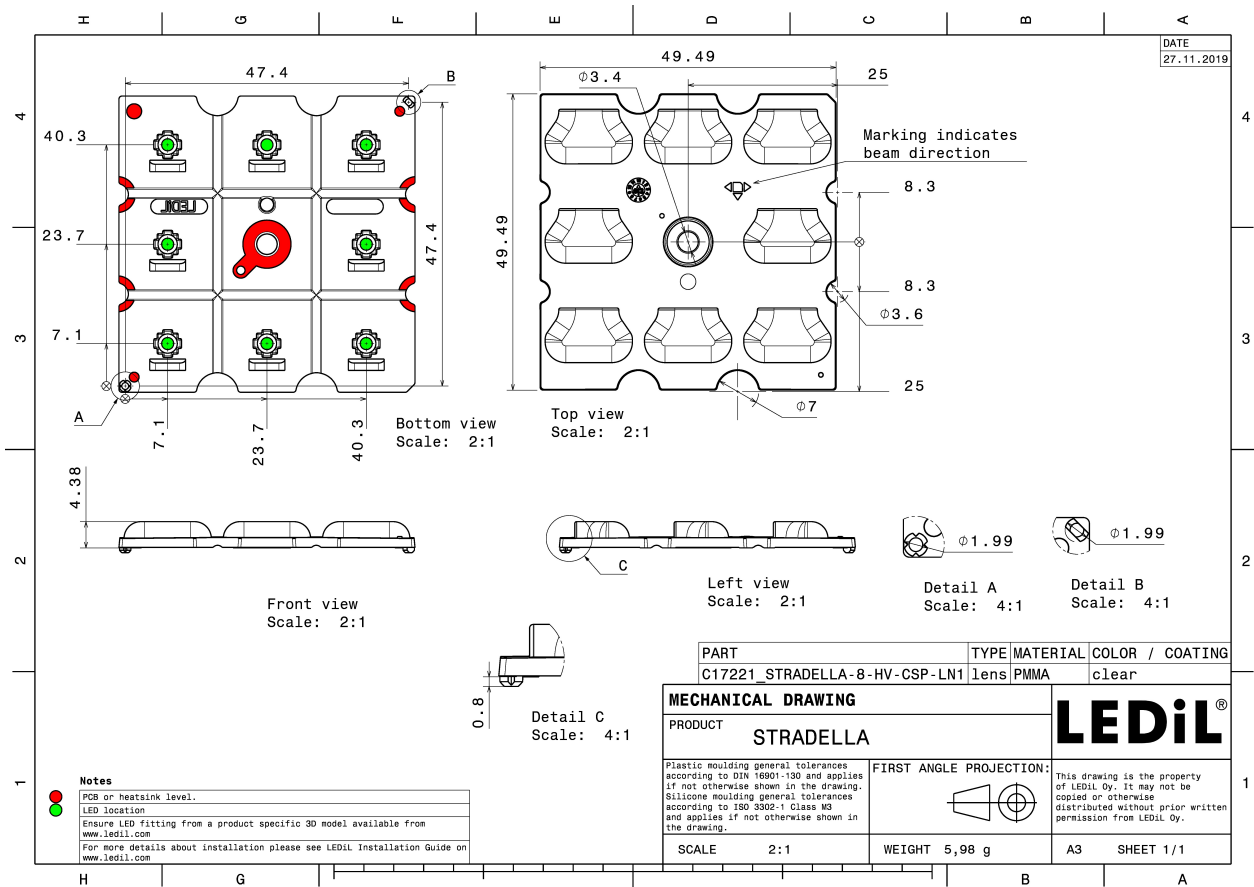


MATERIAL SPECIFICATIONS:

Component	Type	Material	Colour	Finish
STRADELLA-8-HV-CSP-LN1	Multi-lens	PMMA	clear	

ORDERING INFORMATION:

Component	Qty in box	MOQ	MPQ	Box weight (kg)
C17221_STRADELLA-8-HV-CSP-LN1	800	160	160	5.6
» Box size: 480 x 280 x 300 mm				

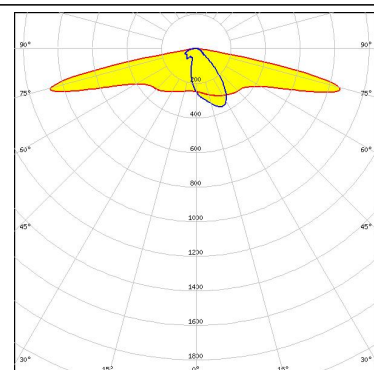


See also our general installation guide: www.ledil.com/installation_guide

PHOTOMETRIC DATA (MEASURED):

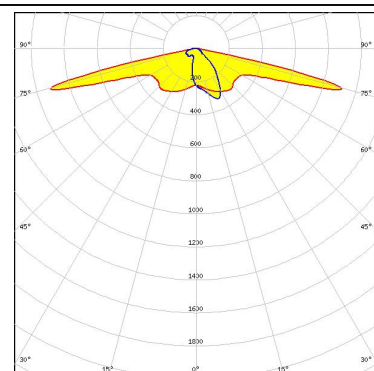
PHILIPS

LED Fortimo FastFlex LED 4x8up PR G5
 FWHM / FWTM Asymmetric
 Efficiency 96 %
 Peak intensity 1 cd/lm
 LEDs/each optic 1
 Light colour White
 Required components:



SAMSUNG

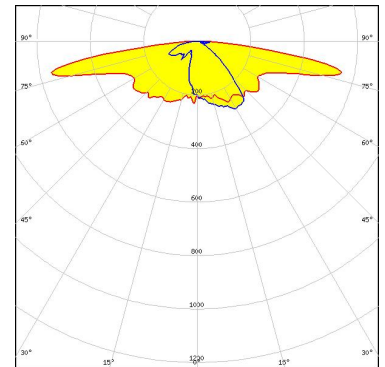
LED LH151B
 FWHM / FWTM Asymmetric
 Efficiency 93 %
 Peak intensity 1.7 cd/lm
 LEDs/each optic 1
 Light colour White
 Required components:



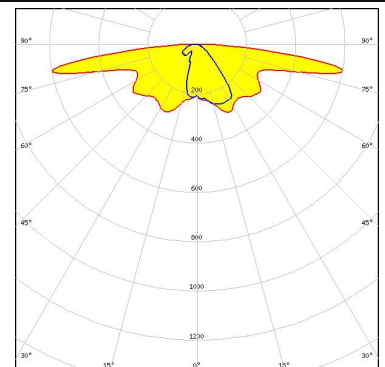
PHOTOMETRIC DATA (SIMULATED):



LED	XD16
FWHM / FWTM	Asymmetric
Efficiency	90 %
Peak intensity	0.8 cd/lm
LEDs/each optic	1
Light colour	White
Required components:	

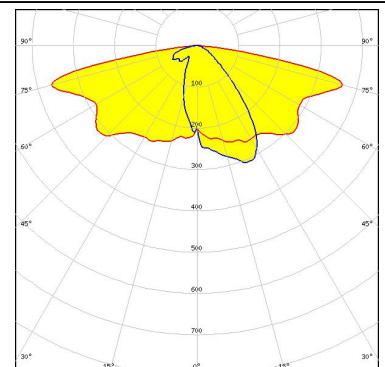


LED	LUXEON CZ
FWHM / FWTM	Asymmetric
Efficiency	90 %
Peak intensity	0.8 cd/lm
LEDs/each optic	1
Light colour	White
Required components:	

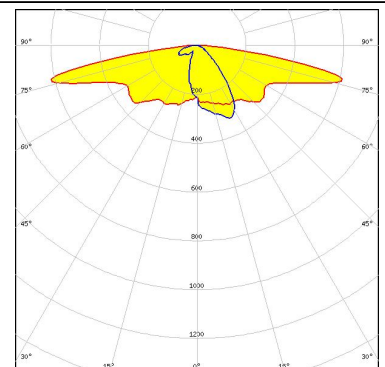


LED	OSCONIQ C 2424
FWHM / FWTM	Asymmetric
Efficiency	78 %
Peak intensity	0.5 cd/lm
LEDs/each optic	1
Light colour	White
Required components:	

Protective plate, glass



LED	OSCONIQ C 2424
FWHM / FWTM	Asymmetric
Efficiency	91 %
Peak intensity	0.8 cd/lm
LEDs/each optic	1
Light colour	White
Required components:	

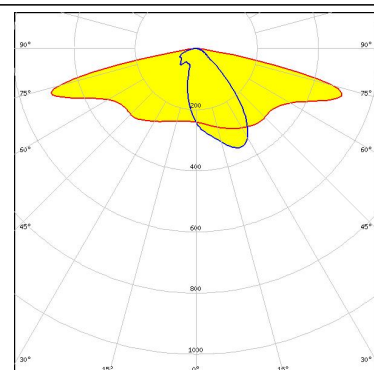


PHOTOMETRIC DATA (SIMULATED):

PHILIPS

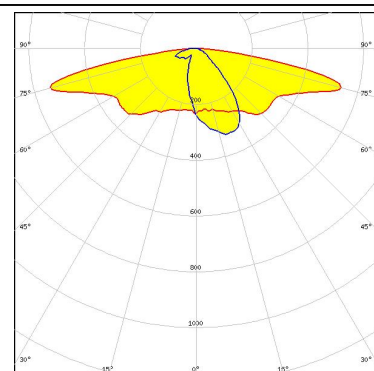
LED Fortimo FastFlex LED 4x8up PR G5
 FWHM / FWTM Asymmetric
 Efficiency 83 %
 Peak intensity 0.6 cd/lm
 LEDs/each optic 1
 Light colour White
 Required components:

Protective plate, glass



SAMSUNG

LED LH181B
 FWHM / FWTM Asymmetric
 Efficiency 90 %
 Peak intensity 0.7 cd/lm
 LEDs/each optic 1
 Light colour White
 Required components:



GENERAL INFORMATION:

NOTE: The typical beam angle will be changed by different color, chip size and chip position tolerance. The typical total beam angle is the full angle measured where the luminous intensity is half of the peak value.

MATERIALS:

As part of our continuous research and improvement processes, and to ensure the best possible quality and availability of our products, LEDiL reserves the right to change material grades without notice.

PRODUCT DATA USER AGREEMENT AND DISCLAIMER:

The measured data in the provided downloadable LEDiL Product Datasheets and Mechanical 2D-Drawings is rounded and provided as reference for planning. LEDiL Oy's optical specifications have been verified by conducting performance testing of the products in accordance with the company's quality system. The reported data are averaged results of multiple measurements with typical variation. LEDiL Oy reserves the right to without prior notification make changes and improvements to its products.

LEDiL Oy assumes neither warranty, nor guarantee nor any other liability of any kind for the contents and correctness of the provided data. The provided data has been generated with highest diligence but the provided data may in reality not represent the complete possible variation range of all intrinsic parameters. Therefore, in certain cases a deviation from the provided data could occur.

LEDiL Oy reserves the right to undertake technical changes of its products without further notification which could lead to changes in the provided data. LEDiL Oy assumes no liability of any kind for the possible deviation from any provided data or any other damage resulting from the usage of the provided data.

The user agrees to this disclaimer and user agreement with the download or usage of the provided files.

LEDiL Oy

Joensuunkatu 13
FI-24240 SALO
Finland

LEDiL Inc.

228 West Page Street
Suite D
Sycamore IL 60178
USA

Ledil Optics Technology (Shenzhen) Co., Ltd.

405 , Block B
Casic Motor Building
Shenzhen 518057
P.R.CHINA

Local sales and technical support

[www.ledil.com/
where_to_buy](http://www.ledil.com/where_to_buy)

Shipping locations

Salo, Finland
Hong Kong, China

Distribution Partners

[www.ledil.com/
where_to_buy](http://www.ledil.com/where_to_buy)