



CE Report RoHS
EN62368-1



FEATURES

- Special switching power supply designed for professional laser galvanometer industry
- Universal 165 - 264VAC or 180 - 370VDC Input voltage
- Operating ambient temperature range: -30°C to +70°C
- Low standby power consumption, high efficiency
- Output short circuit, over-current, over-voltage protection
- High I/O isolation test voltage up to 3000VAC
- Operating altitude up to 5000m

LM60-12A15 series is one of Mornsun's dual output non-isolation enclosed AC-DC switching power supply. It features universal AC input and at the same time accepts DC input voltage, cost-effective, high efficiency, high reliability and double or reinforced insulation. These converters offer excellent EMC performance and meet IEC/EN61000-4, IEC/UL/EN62368, GB4943 standards and they are not only specific used in the laser galvanometer industry, but also widely used in current sensors, motors and other fields.

Selection Guide

Certification	Part No.*	Output Power (W)	Nominal Output Voltage and Current (Vo/Io)		Output Voltage Adjustable Range (V)	Efficiency at 230VAC (%) Typ.	Max. Capacitive Load (μF)	
			(Vo1/Io1)	(Vo2/Io2)			Vo1	Vo2
EN	LM60-12A15	60	+15V/2.0A	-15V/2.0A	14.25-15.75	82	4000	2000

Input Specifications

Item	Operating Conditions	Min.	Typ.	Max.	Unit
Input Voltage Range	AC input	165	--	264	VAC
	DC input	180	--	370	VDC
Input Voltage Frequency		47	--	63	Hz
Input Current	230VAC	--	--	1	A
Inrush Current	230VAC Cold start	--	60	--	
Leakage Current	240VAC	<0.75mA			
Hot Plug		Unavailable			

Output Specifications

Item	Operating Conditions	Min.	Typ.	Max.	Unit
Output Voltage Accuracy	Full load range	Vo1	±1.0	--	%
		Vo2	±3.0	--	
Line Regulation	Rated load	Vo1	±1.0	--	%
Load Regulation	10% - 100% Load (Balanced load)	Vo1	±1.0	--	
		Vo2	±3.0	--	
Ripple & Noise*	20MHz bandwidth (peak-to-peak value)	--	100	--	mV
Temperature Coefficient	Vo1	--	±0.03	--	%/°C
Start-up Delay Time	Rated input voltage	--	--	3	s
Hold-up Time	230VAC	20	--	--	ms
Minimum Load		10	--	--	%
Short Circuit Protection	Recovery time <5s after the short circuit disappear.	Hiccup, continuous, self-recovery			
Over-current Protection	Dual output with balanced load	110%-200% Io, hiccup, self-recovery			
Over-voltage Protection	Vo1	≤22VDC (Hiccup, self-recovery)			

Note: *The "Tip and barrel method" is used for ripple and noise test, output parallel 47μF electrolytic capacitor and 0.1μF ceramic capacitor, please refer to Enclosed Switching Power Supply Application Notes for specific information.

General Specifications

Item	Operating Conditions		Min.	Typ.	Max.	Unit
Isolation Test	Input - ⊕	Electric strength test for 1min., leakage current <10mA	3000	--	--	VAC
	Input - output		1500	--	--	
	Output - ⊕		500	--	--	
Insulation Resistance	Input - ⊕	At 500VDC	50	--	--	MΩ
	Input - output		50	--	--	
	Output - ⊕		50	--	--	
Operating Temperature			-30	--	+70	°C
Storage Temperature			-40	--	+85	
Storage Humidity	Non-condensing		--	--	95	%RH
Power Derating	Operating temperature derating	+50°C to +70°C	2.5	--	--	%/°C
Safety Standard			EN62368-1 (Report) Design refer to IEC/EN/UL62368-1, EN60335-1, EN61558-1, GB4943.1			
Safety Class			CLASS I			
MTBF	MIL-HDBK-217F@25°C		>300,000 h			

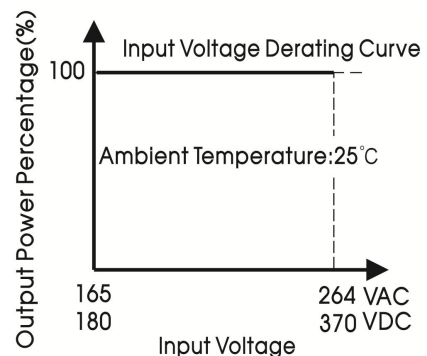
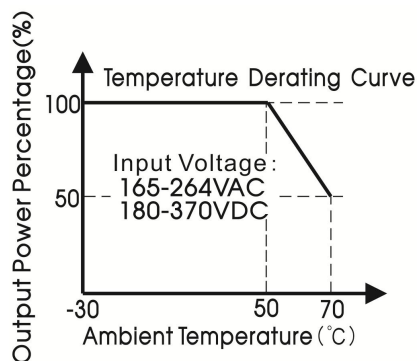
Mechanical Specifications

Case Material	Metal (AL1100, SGCC)
Dimensions	99.00 x 97.00 x 30.00 mm
Weight	240g (Typ.)
Cooling Method	Free air convection

Electromagnetic Compatibility (EMC)

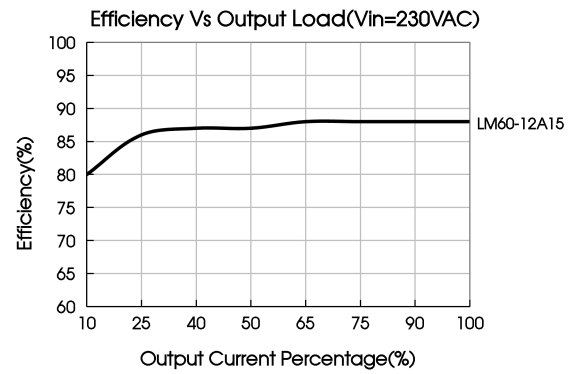
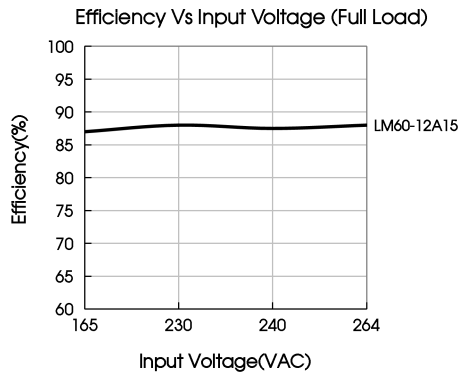
Emissions	CE	CISPR32/EN55032	CLASS A
	RE	CISPR32/EN55032	CLASS A
Immunity	ESD	IEC/EN 61000-4-2	Contact ±6KV/Air ±8KV perf. Criteria A
	RS	IEC/EN 61000-4-3	10V/m perf. Criteria A
	EFT	IEC/EN 61000-4-4	±2KV perf. Criteria A
	Surge	IEC/EN 61000-4-5	line to line ±1KV/line to ground ±2KV perf. Criteria A
	CS	IEC/EN61000-4-6	10 Vr.m.s perf. Criteria A
	Voltage dips, short interruptions and voltage variations immunity	IEC/EN61000-4-11	0%, 70% perf. Criteria B

Product Characteristic Curve

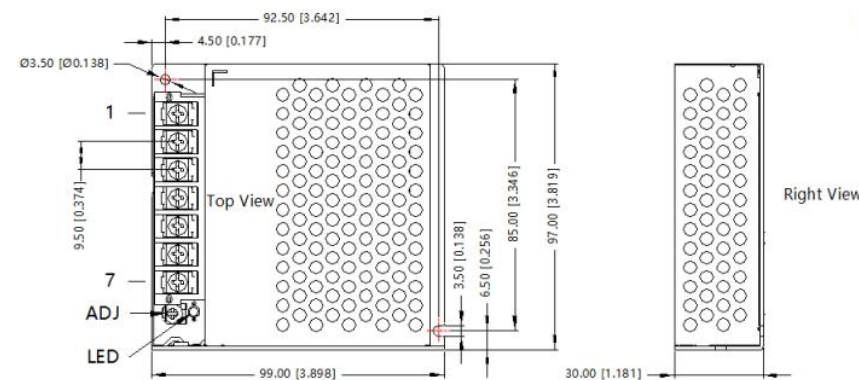


Note: 1. With an AC input voltage between 165-264VAC and a DC input between 180-370VDC the output power must be derated as per the temperature derating curves;

2. This product is suitable for applications using natural air cooling; for applications in closed environment please consult Mornsun FAE.

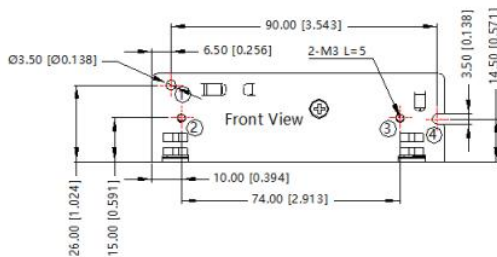


Dimensions and Recommended Layout

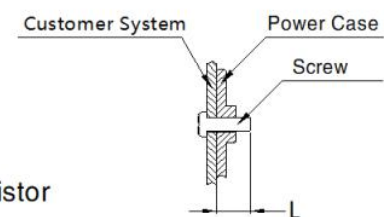
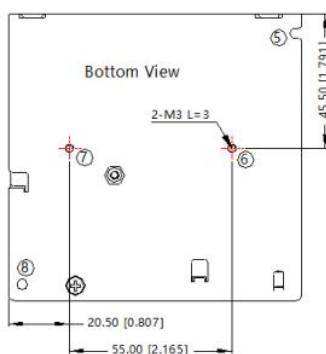


THIRD ANGLE PROJECTION

Pin-Out	
Pin	Function
1	AC(L)
2	AC(N)
3	⊕
4	Vo2
5	COM
6	COM
7	Vo1



Position	Screw Spec.	L(max)	Torque(max)
② - ③	M3	5mm	0.4N·m
⑥ - ⑦	M3	3mm	0.4N·m



Note:
 Unit: mm[inch]
 ADJ: Output adjustable resistor
 Wire range: 22-14AWG
 Connector tightening torque: M3, Max 0.4N·m
 General tolerances: $\pm 1.00[\pm 0.039]$
 ① - ⑧ any position must be connected to PE

Note:

1. For additional information on Product Packaging please refer to www.mornsun-power.com. Packaging bag number: 58220119;
2. Unless otherwise specified, parameters in this datasheet were measured under the conditions of $T_a=25^{\circ}\text{C}$, humidity<75% RH with nominal input voltage and rated output load;
3. The room temperature derating of $5^{\circ}\text{C}/1000\text{m}$ is needed for operating altitude greater than 2000m;
4. All index testing methods in this datasheet are based on our company corporate standards;
5. In order to improve the efficiency at high input voltage, there will be audible noise generated, but it does not affect product performance and reliability;
6. We can provide product customization service, please contact our technicians directly for specific information;
7. Products are related to laws and regulations: see "Features" and "EMC";
8. The out case needs to be connected to PE (\perp) of system when the terminal equipment in operating;
9. The output voltage can be adjusted by the ADJ, clockwise to decrease;
10. Our products shall be classified according to ISO14001 and related environmental laws and regulations, and shall be handled by qualified units.

Mornsun Guangzhou Science & Technology Co., Ltd.

Address: No. 5, Kehui St. 1, Kehui Development Center, Science Ave., Guangzhou Science City, Huangpu District, Guangzhou, P. R. China

Tel: 86-20-38601850

Fax: 86-20-38601272

E-mail: info@mornsun.cn

www.mornsun-power.com