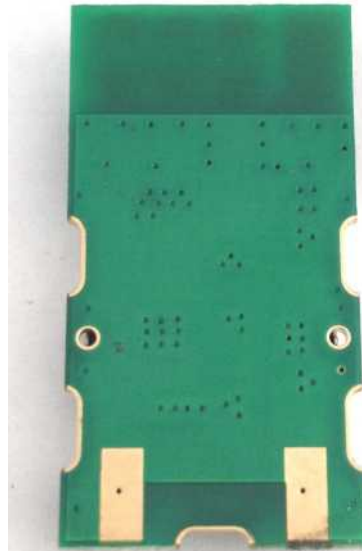
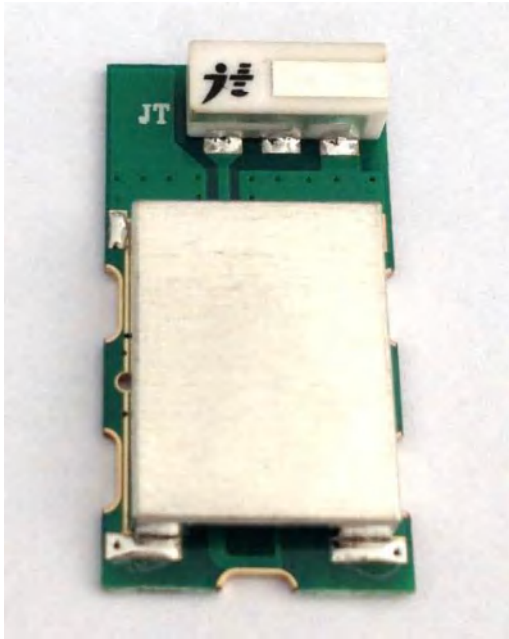
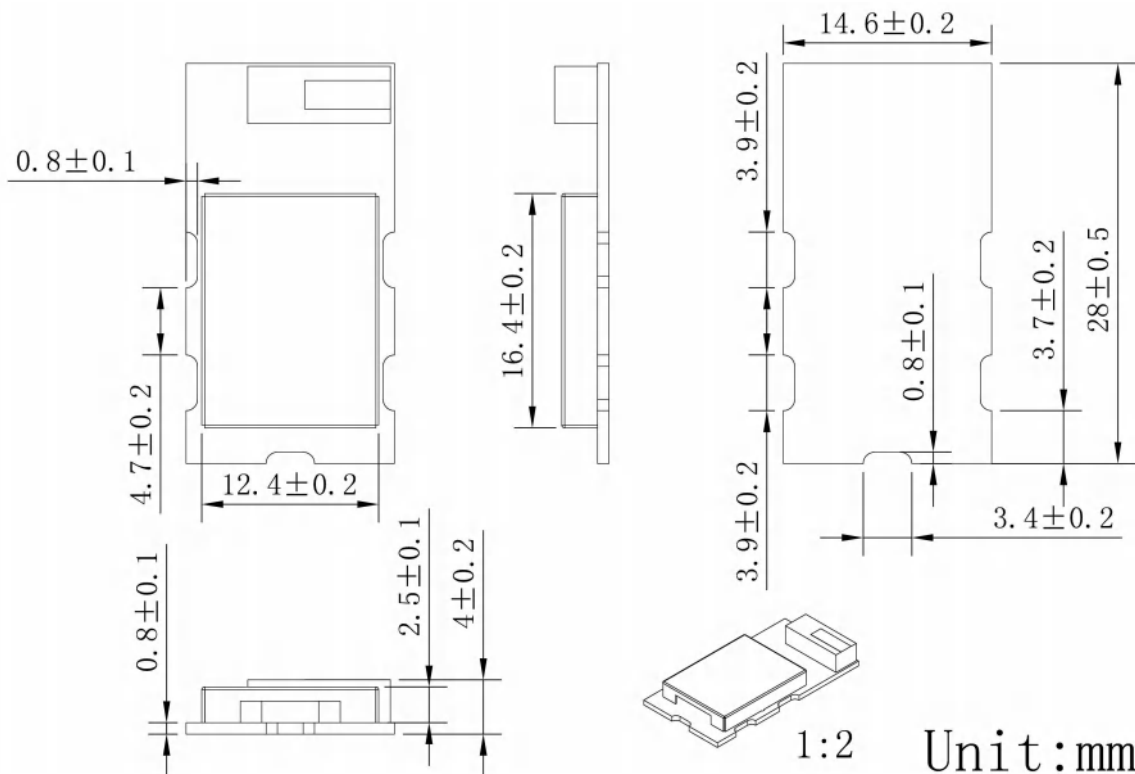


# GPS Internal Active Antenna JCA044P



## DIMENSIONS



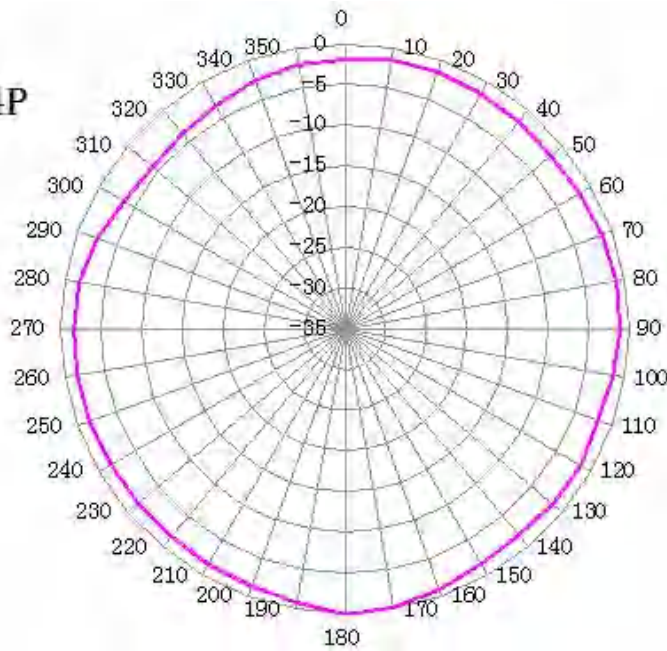


## SPECIFICATIONS

Item		Specifications
Antenna	Center Frequency	1575.42±3MHz
	Band Width	CF±5MHz
	Polarization	Linear
	Gain	1dBi (Zenith)
	V.S.W.R	<2.0
	Impedance	50 Ω
LNA	Gain	26±2dB
	Noise Figure	<2.0dB
	Supply Voltage	2.7~3.3V DC
	Current Consumption	<14mA@3.3V
	V.S.W.R	<2.0
Mechanical	PCB Material	FR4
	Mounting Method	Soldering
Environmental	Operating Temperature	-40°C~+85°C
	Relative Humidity	Up to 95%
	Vibration	10 to 55Hz with 1.5mm amplitude 1 hours
	Environmentally Friendly	ROHS Compliant

**Radiation Pattern**

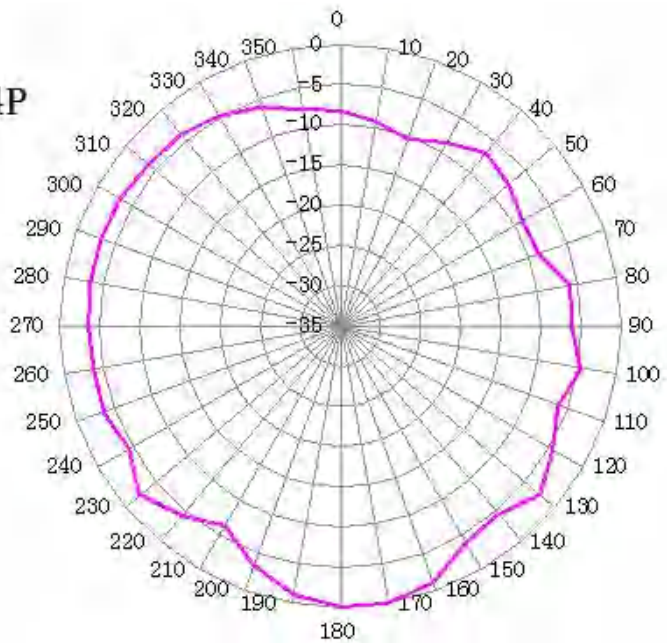
JCA044P



XY PLANE

—1575.42MHz

JCA044P

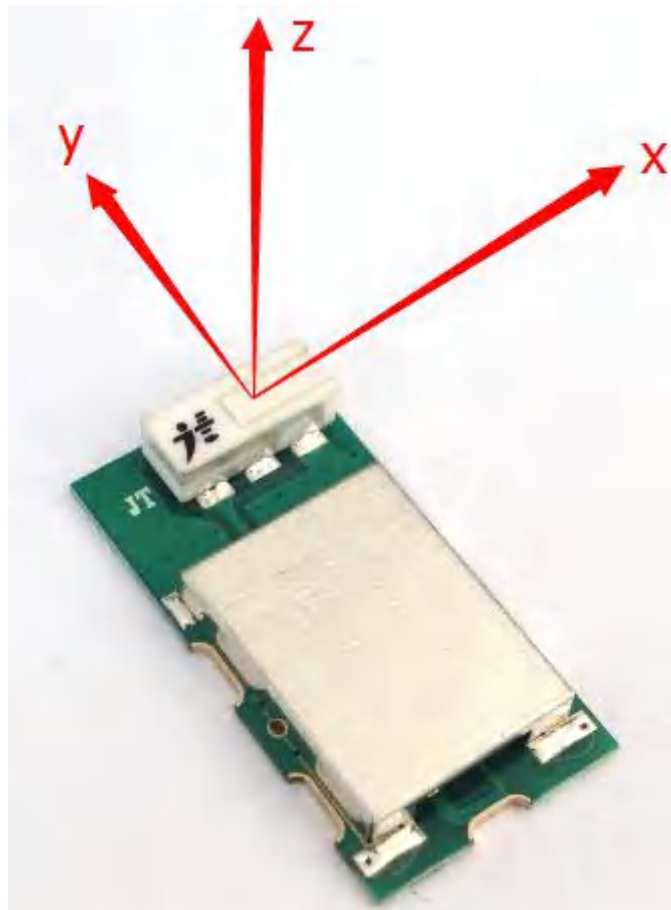
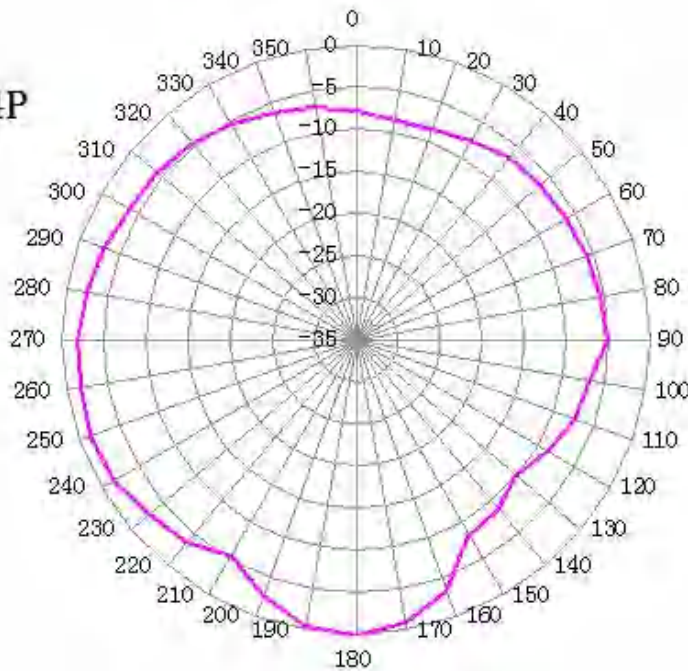


XZ PLANE

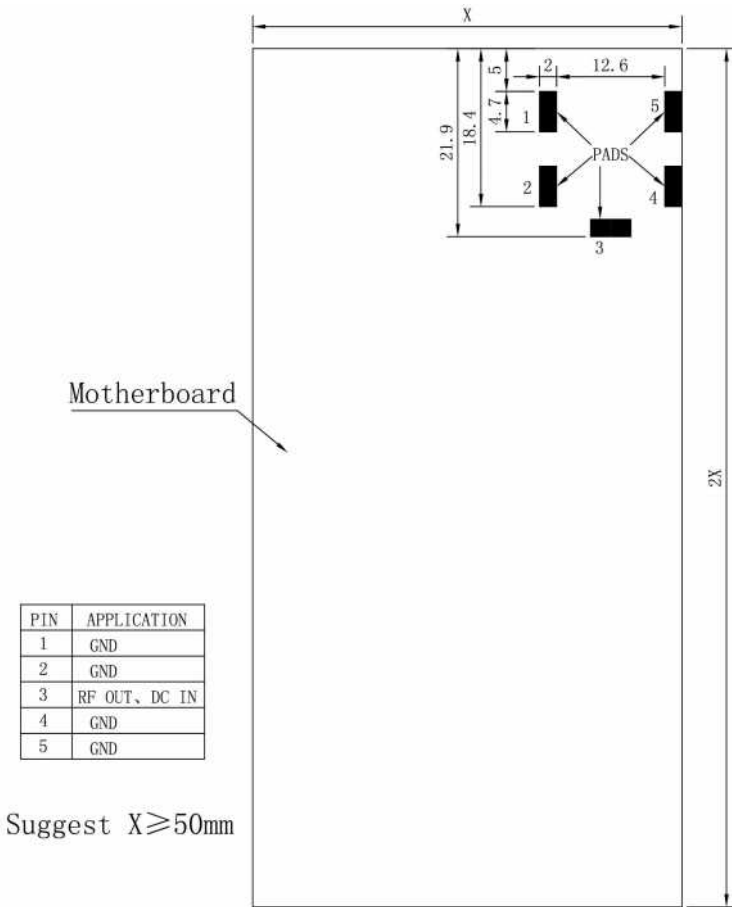
—1575.42MHz

JCA044P

YZ PLANE



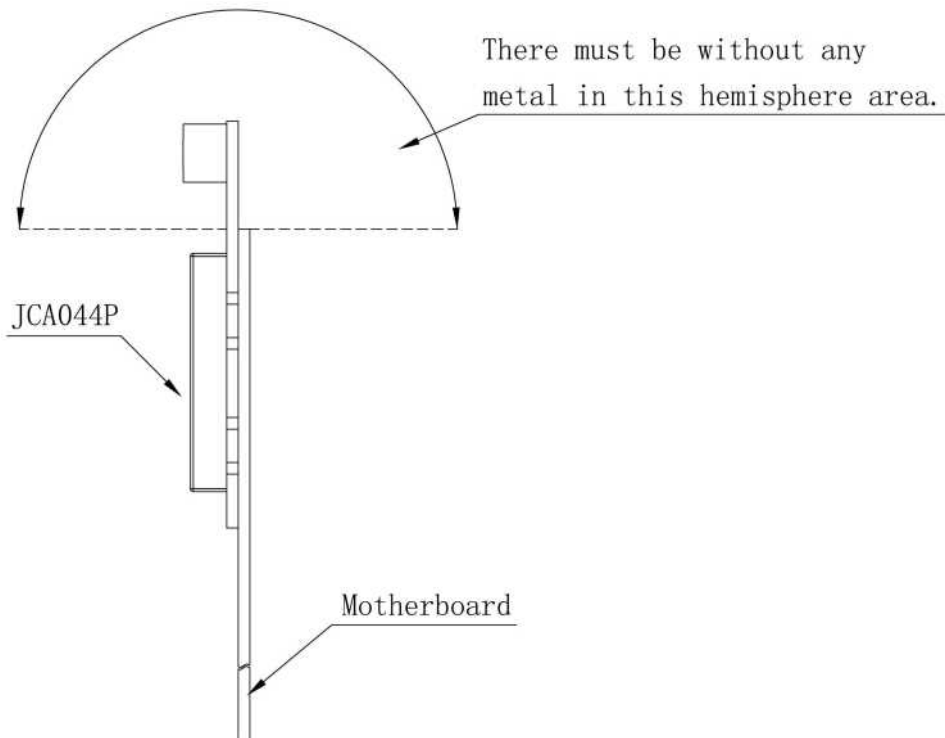
**Recommended Pads**



PIN	APPLICATION
1	GND
2	GND
3	RF OUT, DC IN
4	GND
5	GND

Suggest  $X \geq 50\text{mm}$

Unit:mm





*Jinchang Electron Global Service*

Zhejiang JC Antenna Co., Ltd.  
Address: 398#, Zhenye Road, South Street, Jiaxing, Zhejiang, China  
[www.jinchanggps.com](http://www.jinchanggps.com)

Contact: Dora Soong  
Email&Skype: [sale2@jinchanggps.com](mailto:sale2@jinchanggps.com)  
Mobile: +86 18405863271