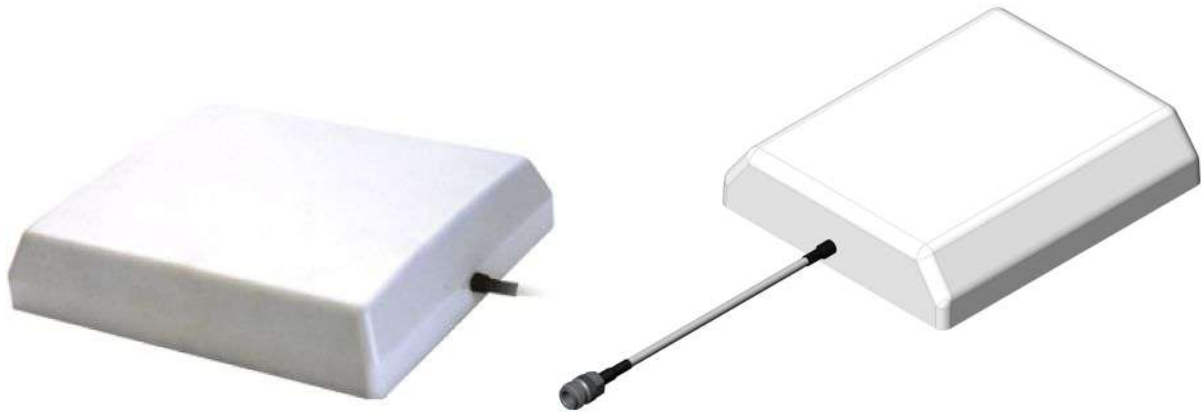


# LTE Antenna

## JCG916L



### SPECIFICATIONS

Item	Specifications	
LTE Antenna	Frequency Range	700 ~ 960/1710 ~ 2700MHz
	Polarization	Vertical
	Gain	7/10
	V.S.W.R	<1.5
	Impedance	50Ω
Mechanical	Cable	RG58
	Connector	N/SMA/or others
	Radome Material	ABS
	Mounting Method	Screw
Environmental	Operating Temperature	-40°C~+60°C
	Relative Humidity	Up to 95%
	Environmentally Friendly	ROHS Compliant