

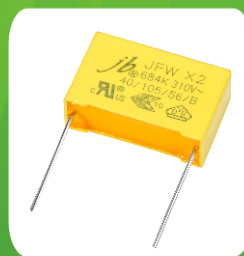
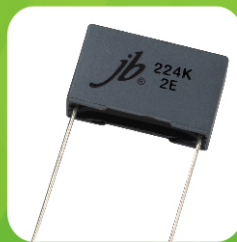
Professional Manufacturer Since 1980

Polyester, Polypropylene Film Capacitors & Radial E Cap, SMD, Snap-in, Screw, Lug Type Aluminum Electrolytic Capacitors



Capacitors Company

Just your best choice



Radial Aluminum Electrolytic Capacitors



JRA - Radial Type

◆ **FEATURES:**

1. Load life of 2000 hours at 85°C.
2. High ripple current.
3. Miniature Series.
4. RoHS Directive Compliant.



JRB - Radial Type

◆ **FEATURES:**

1. Wide temperature range, long life: 105°C 2000 hours.
2. Miniature and large capacity.



JRC - Radial Type

◆ **FEATURES:**

1. Load life of 2000 hours at 105°C.
2. Switch power supply.
3. High Frequency and low impedance.
4. RoHS Directive Compliant.



JRD - Radial Type

◆ **FEATURES:**

1. Load life of 5000 hours at 105°C.
2. Low Impedance, Long Life.
3. Excellent Ripple Current Capability.
4. RoHS Directive Compliant.



JRG - Radial Type

◆ **FEATURES:**

1. Load life of 10000 hours at 105°C.
2. High ripple current.
3. Miniature Series.
4. RoHS Directive Compliant.



JRK - Radial Type

◆ **FEATURES:**

1. Load life of 2000 hours at 105°C.
2. Low Impedance, Long Life.
3. Excellent Ripple Current Capability.
4. RoHS Directive Compliant.



JRW - Radial Type

◆ **FEATURES:**

1. Load life of 2000 hours at 105°C.
2. Extra Lower impedance at high frequency and high ripple current.
3. RoHS Directive Compliant.



JRQ - Radial Type

◆ **FEATURES:**

1. Bi-Polarized.
2. 105°C 1000 hours.
3. Used in polarity reverse and change circuits.

Axial Aluminum Electrolytic Capacitors



JAA - Axial Type

◆ **FEATURES:**

1. Load life of 2000 hours at 85°C.
2. Low Leakage Current.
3. For general purpose application.
4. RoHS Directive Compliant.



JAB - Axial Type

◆ **FEATURES:**

1. Load life of 2000 hours at 85°C.
2. Low Voltage.
3. For general purpose application.
4. RoHS Directive Compliant.



JAC - Axial Type

◆ **FEATURES:**

1. Bi-Polarized, 105°C 1000 hours.
2. Low Dissipation Factor MAX 4% at 1KHz.
3. Product mainly used: Audio Converters and Dividers (partials), Audio amp, Automotive Electronics Products, speaker and so on.



JAD - Axial Type

◆ **FEATURES:**

1. Bi-Polarized, 105°C 1000 hours.
2. Low Dissipation Factor MAX 5% at 1KHz.
3. Product mainly used: Audio Converters and Dividers (partials), Audio amp, Automotive Electronics Products, speaker and so on.



JAE - Axial Type

◆ **FEATURES:**

1. Bi-Polarized, 105°C 1000 hours.
2. Low Dissipation Factor MAX 10% at 1KHz.
3. Product mainly used: Audio Converters and Dividers (partials), Audio amp, Automotive Electronics Products, speaker and so on.



JAF - Axial Type

◆ **FEATURES:**

1. Bi-Polarized, 105°C 1000 hours.
2. Low Dissipation Factor MAX 4% at 120Hz.
3. Product mainly used: Audio Converters and Dividers (partials), Audio amp, Automotive Electronics Products, speaker and so on.

SMD Aluminum Electrolytic Capacitors



JCS - SMD Type

◆ **FEATURES :**

1. Designed for surface mounting on high density circuit board.
2. Emboss carrier tape packing system is available for automatic insertion.



JCK - SMD Type

◆ **FEATURES :**

1. Chip type, operating with wide temperature range -40~+105°C.
2. Designed for surface mounting on high density circuit board.
3. Emboss carrier tape packing system is available for automatic insertion.



JCC - SMD Type

◆ **FEATURES :**

1. Low leakage current (0.5~3.3μA max.)
2. Low cost for replacement of some tantalum applications.
3. Comply with the RoHS directive.



JCD - SMD Type

◆ **FEATURES :**

1. Low impedance with temperature range -55 ~ +105°C.
2. Load life of 1000 ~ 2000 hours.
3. Comply with the RoHS directive.



JCE - SMD Type

◆ **FEATURES :**

1. Wide temperature range -55~+105°C.
2. Load life of 2000~3000 hours.
3. Comply with the RoHS directive.



JCL - SMD Type

◆ **FEATURES :**

1. Wide temperature range -55~+105°C.
2. Load life of 3000~5000 hours.
3. Comply with the RoHS directive.



JCZ - SMD Type

◆ **FEATURES :**

1. Extra low impedance with temperature range -55~+105°C.
2. Impedance 40~60% less than JCD series.
3. Comply with the RoHS directive.



JCV - SMD Type

◆ **FEATURES :**

1. Life time 105°C 3000hrs standard product.
2. High stability and reliability.
3. Reflow soldering is available.
4. Available for high density surface mounting.
5. Comply with the RoHS directive.



JCN - SMD Type

◆ **FEATURES :**

1. Bi-polar with general temperature +85°C.
2. Load life of 1000 hours.



JCA - SMD Type

◆ **FEATURES :**

1. Life time 105°C 6000hrs standard product.
2. High stability and reliability.
3. Reflow soldering is available.
4. Available for high density surface mounting.
5. Comply with the RoHS directive.



JCW - SMD Type

◆ **FEATURES :**

1. Life time 105°C 10000hrs standard product.
2. High stability and reliability.
3. Reflow soldering is available.
4. Available for high density surface mounting.
5. Comply with the RoHS directive.

Large Can Aluminum Electrolytic Capacitors



Snap-in Type

- JNC - Snap-in Type, 2000H at 85°C, for Speaker Network
- JNE - Snap-in Type, 2000H at 105°C, Miniaturized
- JNG - Snap-in Type, 5000H at 85°C, Miniaturized
- JNJ - Snap-in Type, 3000H at 105°C, Miniaturized
- JNK - Snap-in Type, 5000H at 105°C, Long Life



Screw Type

- JML - Screw Type, 2000H at 105°C, Long Life
- JMN - Screw Type, 5000H at 85°C, General
- JMQ - Screw Type, 5000H at 105°C, For Inverter
- JMJ - Screw Type, 2000H at 85°C, Miniaturized



Lug Type

- JSU - Lug Type, For Photo Flash
- JSS - Lug Type, 85°C, Miniaturized Size



JSW - Motor Starting Capacitor

- ◆ **FEATURES :**
 1. Load life of 75000 times and 30000 times
 2. For motor starting
 3. Used for the compressor starter of a refrigerator and air-conditioner and for the water pumps
- ◆ **SPECIFICATIONS:**
 1. Operating Temperature Range : -20°C ~ +70°C
 2. Capacitance Tolerance : 0% ~ 20% (25°C, 120Hz)
 3. Capacitance Range : 25 ~ 500uF
 4. Rated Voltage Range : 110 ~ 330V.AC

Plastic Film Capacitors

JFA - Mylar Polyester Film Capacitor

■ FEATURES:

1. Inductive welded construction epoxy dip coated.
2. Good reputation in use with consumer & industrial electronics.
3. Optimum for automatic insertion due to their small size and light weight.
4. Coated with epoxy resin for superior heat resistance, humidity resistance and solvent resistance.

■ SPECIFICATIONS:

1. Operating Temperature : -40°C ~ +85°C
2. Rated Voltage : 100V, 250V, 400V, 630V, 1000V.DC
3. Capacitance Range : 0.001 ~ 0.47uF
4. Capacitance Tolerance : ±5%, ±10%



JFB - Metallized Polyester Film Capacitor

■ FEATURES:

1. Non-inductive, dip coated, high moisture resistance.
2. Good reputation in use with filtering, DC blocking coupling and general communication equipment.
3. High reliable with its Self-Healing performance.
4. Coated with epoxy resin for superior heat resistance, humidity resistance and solvent resistance.

■ SPECIFICATIONS:

1. Operating Temperature : -40°C ~ +85°C
2. Rated Voltage : 100V.DC, 250V.DC, 400V.DC, 630V.DC.
3. Capacitance Range : 0.01 ~ 6.8uF
4. Capacitance Tolerance : ±5%, ±10%



JFC - Metallized Polyester Film Capacitor (VAC)

■ FEATURES:

1. Non-inductive, coated with epoxy resin or flame retardant epoxy power.
2. High capacitance stability.
3. High moisture resistance.
4. High reliability with Self-Healing performance.
5. Recommendable for high frequency circuit use.
6. Possibility production of special specification.
7. Competitive price.

■ SPECIFICATIONS:

1. Temperature Range : -40°C ~ +85°C
2. Rated Voltage : 250V.AC
3. Capacitance Range : 0.01 ~ 1.5uF
4. Capacitance Tolerance : ±5%, ±10%



JFG - Axial Metallized Polyester & Polypropylene Film Capacitor

■ FEATURES:

1. JFGA & JFGB constructed with metallized polyester film as medium and electric code.
2. JFGC & JFGD constructed with metallized polypropylene film as medium and electric code.
3. CYCLOIDAL and FLAT OVAL SHAPE both available.
4. High reliability, high temperature-resistance, small volume, large capacity and good self-healing property.

■ SPECIFICATIONS:

1. Operating Temperature : -40°C ~ +105°C for JFGA & JFGB
-55°C ~ +100°C for JFGC & JFGD
2. Rated Voltage : 100V.DC ~ 1250V.DC
3. Capacitance Range : 0.01 ~ 68uF
4. Capacitance Tolerance : ±5%, ±10%



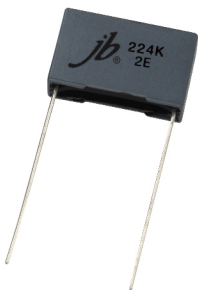
JFD - Box Type Met Polyester Film Capacitor

■ FEATURES:

1. Non-inductive, plastic case and epoxy resin.
2. Box type provides the identical outer appearance.
3. High reliability.

■ SPECIFICATIONS:

1. Reference Standard : GB7332 (IEC 60384-2)
2. Climatic Category : 40/85/21
3. Rated Voltage : 63V, 100V, 160V, 250V, 400V, 630V.DC
4. Capacitance Range : 0.001 ~ 2.2uF
5. Capacitance Tolerance : ±5%, ±10%



JFE - Mini Metallized Polyester Film Capacitor

■ FEATURES:

1. Miniature size, non-inductive, epoxy dip coated.
2. The small size can be compared favourably with the staked film capacitor.
3. Epoxy resin powder coating provides the identical outer appearance.
4. Low dissipation factor.
5. Excellent Self-Healing property and reliability.

■ SPECIFICATIONS:

1. Operation Temperature : -40°C ~ +85°C
2. Rated Voltage : 50/63V, 100V, 160V, 250V, 400V.DC
3. Capacitance Range : 0.01 ~ 2.2uF
4. Capacitance Tolerance : ±5%, ±10%



JFX - Premium Metallized Polypropylene Film capacitors-Axial

■ FEATURES:

1. Quick transient design.
2. High Precise Capacitance ±3%, ±5%
3. Very Low Dielectric absorption factor

■ SPECIFICATIONS:

1. Operating Temperature : -55°C ~ +85°C
2. Rated Voltage : 250V, 400V, 630V.DC
3. Capacitance Range : 0.047~100uF
4. Capacitance Tolerance : ±3%, ±5%



JSX - Superior Metallized Polypropylene Film Capacitors

■ FEATURES:

1. Quick transient design
2. High Precise Capacitance ±3%, ±5%
3. Very Low Dielectric absorption factor
4. Excellent handling of high current audio pulses

■ SPECIFICATIONS:

1. Operation Temperature : -55°C ~ +85°C
2. Rated Voltage : 250V, 400V, 630V.DC
3. Capacitance Range : 0.047~100uF
4. Capacitance Tolerance : ±3%, ±5%



JFL - Metallized Polypropylene Film Capacitor

■ FEATURES:

1. Non-inductive, epoxy dip coated, high moisture resistance.
2. Dissipation factor is normally low and it is stable against high frequency and change of temperature.
3. Recommended for high-frequency circuits like s-curve compensating circuit.
4. Highly reliable because of its excellent Self-Healing performance.

■ SPECIFICATIONS:

1. Operating Temperature : -40°C ~ +85°C
2. Rated Voltage : 100V.DC, 250V.DC, 400V.DC, 630V.DC.
3. Capacitance Range : 0.01 ~ 10.0uF
4. Capacitance Tolerance : ±5%, ±10%



JFP - High Voltage Met Polypropylene Film Capacitor

■ FEATURES:

1. Extended foil, flame retardant epoxy coated.
2. Ideal for high AC current applications, such as CRT deflection for R-F generators.
3. Coated with flame retardative epoxy resin which provides from humidity and mechanical damage.
4. Temperature coefficient is negative and variety linear over the operation temperature.

■ SPECIFICATIONS:

1. Operating Temperature : -40°C ~ +85°C
2. Rated Voltage : 1000V, 1250V, 1600V, 2000V.DC
3. Capacitance Range : 0.001 ~ 0.15uF
4. Capacitance Tolerance : ±5%, ±10%



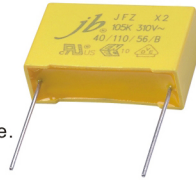
JFW - X2 Metallized Polypropylene Film Capacitor (310VAC)

■ **FEATURES:**

1. Non-inductive, (UL940V-0) plastic case sealed with epoxy resin.
2. Used in across-the-line, interference suppression circuit
3. Class X2 safety capacitors for 310VAC.
4. Provides interference suppression capacitor with VDE, ENEC and UL approvals.
5. Short delivery, some items have stock available.
6. High quality commitment, good prices support.
7. Cut leads, Bulk, Ammo Tape Package, Long leads are available.
8. Fast sales response for cross, quotation.

■ **SPECIFICATIONS:**

1. Voltage Rating: 310 VAC
2. Capacitance Range: 0.0047 – 10uF
3. Capacitance Tolerance: std±10%(K)
4. Operating Temperature: -40°C to 105°C



JFZ - 310VAC X2 Metallized Polypropylene Film Capacitor

■ **FEATURES:**

1. Non-inductive, (UL940V-0) plastic case sealed with epoxy resin.
2. Class X2 safety capacitors for 310VAC.
3. Provides interference suppression capacitor with VDE, ENEC and UL approvals.
4. Short delivery, some items have stock available.
5. High quality commitment, good prices support.
6. Ammo Tape Pack, Cut leads, Long leads are available.
7. Fast sales response for cross, quotation.

■ **SPECIFICATIONS:**

1. Operating Temperature: -40°C ~ +110°C
2. Voltage Rating: 310VAC
3. Safety Approvals: ENEC, VDE, UL, cUL.
4. Capacitance Range: 0.0022 ~ 2.2uF
5. Capacitance Tolerance: ±10%

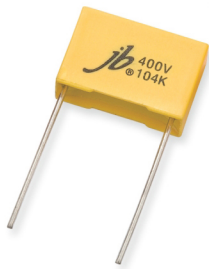
JFM - Box Type Met Polypropylene Film Capacitor

■ **FEATURES:**

1. High reliability at high current stress.
2. Self-Healing Property.
3. Flame retardant plastic case and epoxy resin.
4. Low losses, high dv / dt capability.
5. High moisture resistance.
6. High stability of capacitance and long life.

■ **SPECIFICATIONS:**

1. Operating Temperature : -40°C ~ +85°C
2. Rated Voltage : 250V, 400V, 630V.DC,
3. Capacitance Range : 0.0047~3.9uF
4. Capacitance Tolerance : ±2%, ±5%, ±10%



JFJ - Mini Box Stacked Met Polyester Film Capacitor

■ **FEATURES:**

1. Stacked technology, High dv / dt ability.
2. Small size due to stacked construction, pitch size all 5mm.
3. Non-inductive, Plastic case and epoxy resin.

■ **SPECIFICATIONS:**

1. Operating Temperature : -55°C ~ +105°C
2. Rated Voltage : 50 / 63V.DC, 100V.DC, 250V.DC, 400V.DC, 500V.DC, 630V.DC
3. Capacitance Range : 0.001 ~ 1.0uF
4. Capacitance Tolerance : ±5%, ±10%

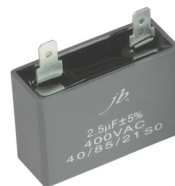
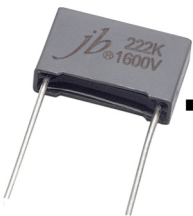
JFQ - High Voltage Box Type Met Polypropylene Film Capacitor

■ **FEATURES:**

1. Double sided metallized structure, widely used in high voltage, high frequency and pulse circuit.
2. Negative temperature coefficient of capacitance.
3. Low loss and small inherent temperature rise.

■ **SPECIFICATIONS:**

1. Operating Temperature Range : -40°C ~ +105°C
2. Rated Voltage : 1000V, 1400V/1600V, 2000V.DC
3. Capacitance Range : 0.00022 ~ 3.9uF
4. Capacitance Tolerance : ±2% (G), ±3% (E), ±5% (J), ±10% (K), ±20% (M)



JFS - Motor Running Capacitor-CBB61

■ **FEATURES:**

1. Electrical apparatus use metalized film with precisely quality control.
2. Low D.F. (dissipation factor), lower temperature rise.
3. High I.R. (insulation resistance) small size.
4. High safety. High reliability.
5. Durability and characteristics of frequency, etc.

■ **SPECIFICATIONS:**

1. Operating Condition : -25°C ~ +70°C
2. Rated Voltage : 250V.AC, 450V.AC
3. Capacitance Range : 1uF~20uF (JFS-B-D, JFS-5-7, JFS-9)
4. Capacitance Tolerance : ±5%, ±10%

JFS - Motor Running Capacitor-CBB60

■ **FEATURES:**

1. Electrical apparatus use metalized film with precisely quality control.
2. Low D.F. (dissipation factor), lower temperature rise.
3. High I.R. (insulation resistance) small size.
4. High safety. High reliability.
5. Durability and characteristics of frequency, etc.

■ **SPECIFICATIONS:**

1. Operating Condition : -40°C ~ +85°C
2. Rated Voltage : 250V.AC, 450V.AC
3. Capacitance Range : 1uF ~ 100uF (JFS-10~21)
4. Capacitance Tolerance : ±5%, ±10%
5. Safety Approvals : UL, cUL, CE



JFS - Motor Running Capacitor-CBB65

■ **FEATURES:**

1. Electrical apparatus use metalized film with precisely quality control.
2. Low D.F. (dissipation factor), lower temperature rise.
3. High I.R. (insulation resistance) small size.
4. High safety. High reliability.
5. Durability and characteristics of frequency, etc.

■ **SPECIFICATIONS:**

1. Operating Condition : -40°C ~ +85°C
2. Rated Voltage : 370V.AC, 450V.AC
3. Capacitance Range : 2uF~100uF (JFS-22~26)
4. Capacitance Tolerance : ±5%

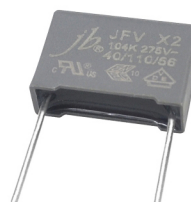
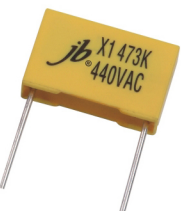
JFT - Metallized Polypropylene Film AC Capacitor Class-X1

■ **FEATURES:**

1. This specifications cover the requirements of jb. Metallized Polypropylene.
2. Film AC Capacitor (Interference Suppressors Class-X1).

■ **SPECIFICATIONS:**

1. Capacitor Class : X1 class
2. Operating Temperature : -55°C ~ +105°C
3. Rated Voltage : 300V.AC, 440V.AC
4. Capacitance Range : 0.0022 ~ 4.7uF
5. Capacitance Tolerance : ±10%



JFV - 275VAC X2 Metallized Polypropylene Film Capacitor

■ **FEATURES:**

1. Non-inductive, (UL940V-0) plastic case sealed with epoxy resin.
2. Provides interference suppression with VDE & ENEC and UL approvals.

■ **SPECIFICATIONS:**

1. Operating Temperature : -40°C ~ +110°C
2. Voltage Rating : 250, 275, 305, 310V.AC
3. Capacitance Range : 0.001 ~ 2.2uF
4. Capacitance Tolerance : ±10%