

GN For Inverter, Miniature, High Ripple Series

M Miniaturized **LL** Long Life



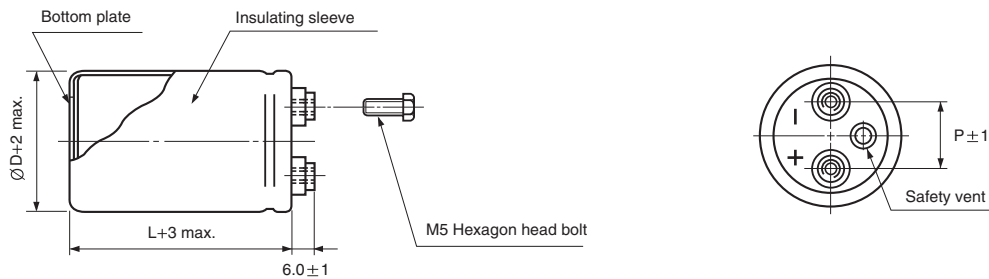
GH → **GN**
Miniature High Ripple

- Miniature size, High ripple current compared with GH series
- High reliability, long life guaranteed for 5000 hours load life at 85°C (500WV is assured 2000 hours at 85°C)
- Suited for use in industrial power supplies for inverters
- Complied to the RoHS directive

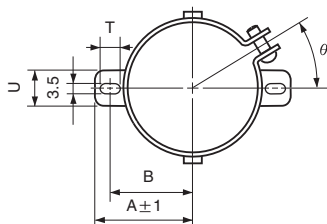
| Item | Characteristics | |
|---|--|-----------------------------------|
| Operating temperature range | -25 ~ +85°C | |
| Capacitance tolerance | ±20% at 120Hz, 20°C | |
| Leakage current max. | $I=3\sqrt{CV}$ (μA) (after 5 minutes) | |
| Dissipation factor max. | 0.25 max. at 120Hz, 20°C | |
| Load life (after application of the rated voltage for 5000 hours at 85°C) | Leakage current | Less than specified value |
| | Capacitance change | Within ±20% of the initial value |
| | tanδ | Less than 300% of specified value |
| | 500WV products are for 2000 hours. | |
| Shelf life (at 85°C) | After 1000 hours no load test, leakage current, capacitance and tanδ are same as load life value. The measurement shall be performed at 20°C by the KS C IEC 60384 - 4 | |

● DRAWING

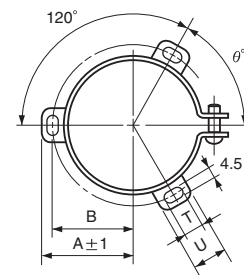
Unit : mm



● TWO LEGS ANGLE



● THREE LEGS ANGLE



● TWO LEGS ANGLE SIZE TABLE

| ØD | B | A | T | U | θ° | P |
|------|------|------|---|----|----|------|
| 51 | 33.6 | 39.9 | 6 | 14 | 30 | 22 |
| 63.5 | 40.8 | 46.8 | 6 | 14 | 30 | 28.6 |

● THREE LEGS ANGLE SIZE TABLE

| ØD | B | A | T | U | θ° | P |
|------|------|------|---|----|----|------|
| 51 | 32.9 | 38.9 | 7 | 12 | 60 | 22 |
| 63.5 | 38.4 | 45.3 | 7 | 14 | 60 | 28.6 |
| 76.2 | 44.5 | 51.5 | 8 | 16 | 60 | 31.8 |
| 89 | 50.8 | 61 | 8 | 16 | 60 | 31.8 |

LARGE ALUMINUM ELECTROLYTIC CAPACITORS

GN series

● DIMENSIONS & MAXIMUM PERMISSIBLE RIPPLE CURRENT

| μF \diagdown WV | 400 | | 450 | | 500 | |
|----------------------------|------------|------|------------|------|------------|------|
| 1800 | | | | | 63.5 × 100 | 6.5 |
| 2200 | 51 × 100 | 8.4 | 51 × 120 | 8.6 | 63.5 × 120 | 7.7 |
| 2700 | 51 × 110 | 10.0 | 63.5 × 100 | 10.5 | 76.2 × 100 | 8.8 |
| 3300 | 63.5 × 100 | 11.6 | 63.5 × 110 | 11.9 | 76.2 × 120 | 10.4 |
| 3900 | 63.5 × 100 | 12.3 | 76.2 × 100 | 13.9 | 76.2 × 140 | 12.1 |
| 4700 | 63.5 × 120 | 14.5 | 76.2 × 110 | 15.5 | 89 × 120 | 13.7 |
| 5600 | 76.2 × 110 | 16.5 | 76.2 × 130 | 15.9 | 89 × 140 | 17.8 |
| 6800 | 76.2 × 120 | 17.5 | 76.2 × 150 | 18.4 | | |
| 8200 | 76.2 × 140 | 18.7 | 89 × 140 | 19.7 | | |
| 10000 | 89 × 140 | 20.5 | | | | |
| 12000 | 89 × 150 | 21.0 | | | | |

Ripple current (A rms) at 85°C, 120Hz
 Case size $\varnothing D \times L$ (mm)

● FREQUENCY COEFFICIENT OF PERMISSIBLE RIPPLE CURRENT

| Frequency | 50Hz | 120Hz | 300Hz | 1kHz | 3kHz |
|-------------|------|-------|-------|------|------|
| Coefficient | 0.8 | 1.0 | 1.1 | 1.3 | 1.4 |