

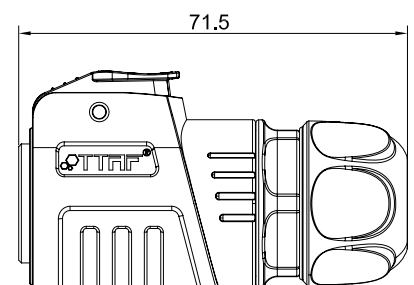
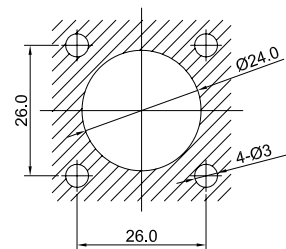
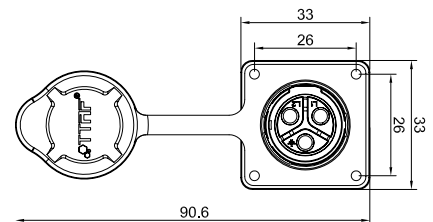
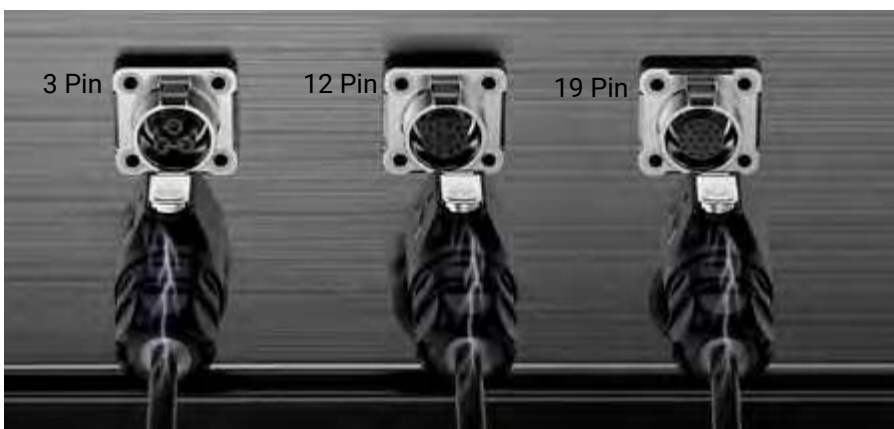


# TT30 SERIES

## 3-4-10-12-19-24 Pin Waterproof Connector

Product Code - TT30 Series

EN 60309-1  
EN 60695-2  
EN 61984-2009



Pin Numbers	3-4	10-12	19-24
Operating Voltage	500V.	250V.	125V.
Current Rating	22A.	10A.	3A.
Withstanding Voltage	2500V.	2500V.	1500V.
Contact Resistance	<1 MΩ	<3 MΩ	<5 MΩ
Temperature Rise	20A 30°C	10A 30°C	3A 30°C
Temperature Rise	25A 40°C	15A 40°C	7A 40°C
Temperature Rise	30A 50°C	20A 50°C	10A 50°C
Mating Cycle	1700	1700	1700
Seal Material	Silicone	Silicone	Silicone
Contact Dimension	3.0*3-3.0*4	1.5*10-1.5*12	1.0*1.9-1.0*2.4
IP Class	IP65/IP67	IP65/IP67	IP65/IP67



## Product Code

TT	30	M	03	PE	0	1	001
1	2	3	4	5	6	7	8

<b>1</b> Product Name	Name Of Product
<b>2</b> Mounting Size	20 - 25 - 30 - 35
<b>3</b> Type Of Terminal	M: male, F: female, U: USB, R: RJ45, F: fiber optic
<b>4</b> Quantity Of Terminal	2 - 3 - 4 - 7 - 9 etc.
<b>5</b> Category	PE: panel type , SX: cable type
<b>6</b> Connection Of Wire	0: solder
<b>7</b> Generation	1
<b>8</b> Special Code	Material Color

