

GH For inverter Circuits Series

M Miniaturized **LL** Long Life



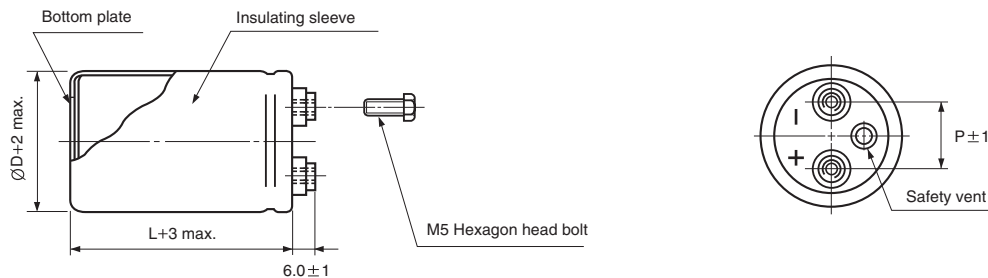
- Screw terminal series in compact case sizes
- Miniature size, High ripple current compared with GF series
- High reliability, long life guaranteed for 5000 hours load life at 85°C (500WV is assured 2000 hours at 85°C)
- Suited for use in industrial power supplies for inverters
- Complied to the RoHS directive

GF → **GH**
Miniature High ripple

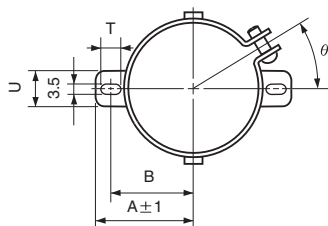
Item	Characteristics	
Operating temperature range	-25 ~ +85°C	
Capacitance tolerance	±20% at 120Hz, 20°C	
Leakage current max.	$I=3 \sqrt{CV}$ (µA) (after 5 minutes)	
Dissipation factor max.	0.25 max. at 120Hz, 20°C	
Load life (after application of the rated voltage for 5000 hours at 85°C)	Leakage current	Less than the specified value
	Capacitance change	Within ±20% of the initial value
	tanδ	Less than 300% of specified value
	500WV products are for 2000 hours	
Shelf life (at 85°C)	After 1000 hours no load test, leakage current, capacitance and tanδ are same as load life value. The measurement shall be performed at 20°C by the KS C IEC 60384 - 4	

● DRAWING

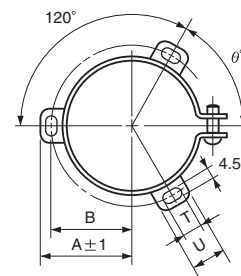
Unit : mm



● TWO LEGS ANGLE



● THREE LEGS ANGLE



● TWO LEGS ANGLE SIZE TABLE

ØD	B	A	T	U	θ°	P
51	33.6	39.9	6	14	30	22
63.5	40.8	46.8	6	14	30	28.6

● THREE LEGS ANGLE SIZE TABLE

ØD	B	A	T	U	θ°	P
51	32.9	38.9	7	12	60	22
63.5	38.4	45.3	7	14	60	28.6
76.2	44.5	51.5	8	16	60	31.8
89	50.8	61	8	16	60	31.8

LARGE ALUMINUM ELECTROLYTIC CAPACITORS

GH series

● DIMENSIONS & MAXIMUM PERMISSIBLE RIPPLE CURRENT

μF \diagdown WV	400		450		500	
1800					63.5 × 110	6.5
2200	51 × 100	8.4	51 × 130	8.6	63.5 × 130	7.7
2700	51 × 130	10.5	63.5 × 110	10.5	76.2 × 110	8.8
3300	63.5 × 100	11.6	63.5 × 120	11.9	76.2 × 130	10.4
3900	63.5 × 110	12.3	76.2 × 110	13.9	76.2 × 150	12.1
4700	63.5 × 130	14.5	76.2 × 120	15.5	89 × 130	13.7
5600	76.2 × 120	15.7	76.2 × 140	15.9	89 × 150	17.8
6800	76.2 × 130	17.5	76.2 × 160	18.4		
8200	76.2 × 150	18.7	89 × 150	19.7		
10000	89 × 150	20.5				
12000	89 × 160	21.0				

Ripple current (A rms) at 85°C, 120Hz
 Case size $\varnothing D \times L$ (mm)

● FREQUENCY COEFFICIENT OF PERMISSIBLE RIPPLE CURRENT

Frequency	50Hz	120Hz	300Hz	1kHz	3kHz
Coefficient	0.8	1.0	1.1	1.3	1.4