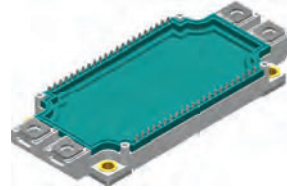


# IGBT XPT™ Modules in SimBus F package

- space savings
- reduced protection circuits
- package designed for wave soldering
- press fit pin version available

See data sheet for pin arrangement



X143

Simbus F

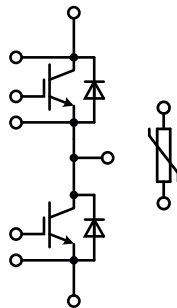
**Package style**

Outline drawings  
on pages O-36...O-59

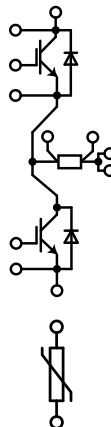
Type	V <sub>CES</sub>	I <sub>C80</sub> IGBT	V <sub>CE(sat) typ</sub> IGBT	E <sub>on</sub> IGBT	E <sub>off</sub> IGBT	R <sub>thJC</sub> IGBT	I <sub>F80</sub> Diode	R <sub>thJC</sub> Diode
▶ <b>New</b> ◇ <b>under development</b>	V	T <sub>C</sub> = 80°C A	T <sub>J</sub> = 25°C V	T <sub>J</sub> = 125°C mJ	T <sub>J</sub> = 125°C mJ	K/W	T <sub>C</sub> = 80°C A	K/W
<b>Trench IGBT Phase-Leg</b>								
◇ MITG 600PF650TSF	650	490	1.65	6	23	0.085	340	0.095
<b>XPT™ / X2PT™ IGBT Phase-Leg</b>								
MIXA 225PF1200TSF	1200	250	1.80	20	27	0.115	185	0.145
MIXA 300PF1200TSF		325	1.80	20	42	0.085	185	0.145
MIXA 450PF1200TSF		450	1.80	22	68	0.060	265	0.095
MIXG 300PF1700TSF	1700	315	2.10	60	69	0.078	205	0.180
MIXG 450PF1700TSF		435	2.10	110	108	0.061	330	0.110
<b>Trench IGBT Phase-Leg</b>								
◇ MITG 300PF1200TSF	1200	350	1.65	28 (150°C)	35 (150°C)	0.090	205	0.180
◇ MITG 450PF1200TSF		525	1.65	35 (150°C)	54 (150°C)	0.070	330	0.110
◇ MITG 600PF1200TSF		700	1.65	51 (150°C)	88 (150°C)	0.050	450	0.080
<b>Trench IGBT Phase-Leg with Shunt</b>								
◇ MITG 300PF1200STSF	1200	350	1.65	28 (150°C)	35 (150°C)	0.090	205	0.180
◇ MITG 450PF1200STSF		525	1.65	35 (150°C)	54 (150°C)	0.070	330	0.110
◇ MITG 600PF1200STSF		700	1.65	51 (150°C)	88 (150°C)	0.050	450	0.080
<b>XPT™ / X2PT™ IGBT Brake / Boost</b>								
▶ MIXA 225RF1200TSF	1200	250	1.80	20	27	0.115	185	0.145
◇ MIXG 450RF1700TSF	1700	435	2.10	110	108	0.061	330	0.110

Options: press fit pin version and phase change material; please contact IXYS sales office for availability

...PF...  
phase-leg



...PF...  
phase-leg & shunt



...RF...  
brake / boost

