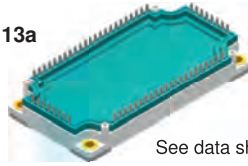


# IGBT Modules – Six-Pack configuration

X113/X113a

E3-Pack/PPF



See data sheet for pin arrangement

## Six-Pack IGBT Modules

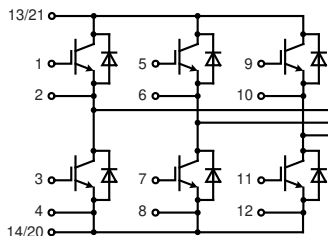
### Package style

Outline drawings on pages O-36...O-59

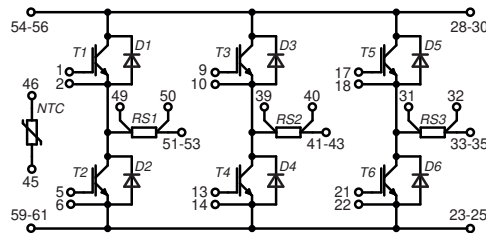
Type	$V_{CES}$	$I_{C25}$ IGBT $T_C = 25^\circ\text{C}$	$I_{C80}$ IGBT $T_C = 80^\circ\text{C}$	$V_{CE(sat)}$ typ IGBT $T_J = 25^\circ\text{C}$	$E_{off}$ IGBT $T_J = 125^\circ\text{C}$	$R_{thJC}$ IGBT	$I_{F25}$ Diode $T_C = 25^\circ\text{C}$	$I_{F80}$ Diode $T_C = 80^\circ\text{C}$	NTC	Layout
	V	A	A	V	mJ	K/W	A	A		
<b>600 V NPT IGBT</b>										
○ MWI 150-06A8	600	170	115	2.0	4.6	0.24	210	130		A
○ MWI 200-06A8		225	155	2.0	6.3	0.18	260	165		A
<b>1200 V NPT IGBT</b>										
○ MWI 100-12A8		160	110	2.2	14.6	0.19	200	130		A
<b>1200 V SPT+ IGBT</b>										
MIEB 100W1200DPFTEH	1200	183	128	1.8	9.7	0.20	135	90	•	B
MIEB 101W1200EH		183	128	1.8	9.7	0.20	135	90		A
<b>1200 V XPT™ IGBT</b>										
MIXA 80W1200TEH <sup>1)</sup>	1200	120	84	1.8	8.3	0.32	135	90	•	B
MIXA 100W1200TEH <sup>1)</sup>		155	108	1.8	11.0	0.25	135	90	•	B
MIXA 150W1200TEH <sup>1)</sup>		220	150	1.8	16.0	0.18	190	130	•	B
<b>1200 V X2PT™</b>										
MIXG 120W1200DPFTEH <sup>1)</sup>	1200	185	140	1.7	8.2 (150°C)	0.30	199	127	•	B
MIXG 120W1200TEH <sup>1)</sup>		185	140	1.7	8.2 (150°C)	0.30	180	135	•	B
➤ MIXG 120W1200PTEH <sup>2)</sup>		185	140	1.7	8.2 (150°C)	0.30	180	135	•	B
◇ MIXG 120W1200PTEH-PC <sup>2)3)</sup>		185	140	1.7	8.2 (150°C)	0.30	180	135	•	B
MIXG 180W1200TEH <sup>1)</sup>		260	195	1.7	14.7 (150°C)	0.18	230	170	•	B
➤ MIXG 180W1200PTEH <sup>2)</sup>		260	195	1.7	14.7 (150°C)	0.18	230	170	•	B
➤ MIXG 180W1200PTEH-PC <sup>2)3)</sup>		260	195	1.7	14.7 (150°C)	0.18	230	170	•	B
MIXG 240W1200TEH <sup>1)</sup>		312	233	1.7	20.5 (150°C)	0.16	200	144	•	B
◇ MIXG 240W1200PTEH <sup>2)</sup>		312	233	1.7	20.5 (150°C)	0.16	200	144	•	B
◇ MIXG 240W1200PTEH-PC <sup>2)3)</sup>		312	233	1.7	20.5 (150°C)	0.16	200	144	•	B
<b>1200 V Trench IGBT</b>										
◇ MITG 100W1200TEH <sup>1)</sup>	1200	175	130	1.65	9.2 (150°C)	0.25	150	100	•	B
◇ MITG 150W1200TEH <sup>1)</sup>		235	180	1.65	14 (150°C)	0.20	200	144	•	B
<b>1200 V X2PT™ with Shunt Resistor</b>										
◇ MIXG 120W1200STEH <sup>1)</sup>	1200	185	140	1.7	8.2 (150°C)	0.24	180	135	•	C
◇ MIXG 180W1200STEH <sup>1)</sup>		260	195	1.7	14.7 (150°C)	0.18	230	170	•	C
◇ MIXG 240W1200ZTEH <sup>1)</sup>		312	233	1.7	20.5 (150°C)	0.16	189	136	•	C
➤ MIXG 240W1200PZTEH <sup>2)</sup>		312	233	1.7	20.5 (150°C)	0.16	189	136	•	C
MIXG 240W1200PZTEH-PC <sup>2)3)</sup>		312	233	1.7	20.5 (150°C)	0.16	189	136	•	C
<b>1700 V Trench IGBT</b>										
◇ MITG 75W1700TEH <sup>1)</sup>	1700	150	115	1.9	27 (150°C)	0.25	85	62	•	B

<sup>1)</sup> Options: press fit pin version and / or phase change material; please contact IXYS sales office for availability

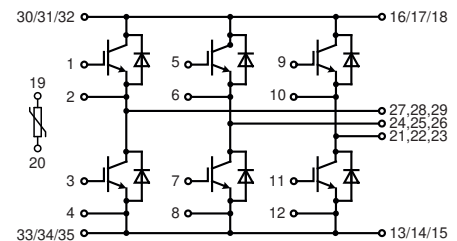
<sup>2)</sup> press fit pin version      <sup>3)</sup> phase change material (PCM)



Layout A



Layout C



Layout B