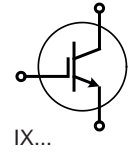







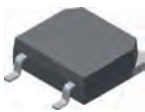
Very High Voltage NPT IGBTs



2.5 kV - 4.5 kV NPT IGBT

Part Type	V _{CES}	I _{C25} T _C = 25°C	I _{C110} T _C = 110°C (90°C)	V _{CE(sat)} max. T _C = 25°C	t _{ri} typ T _J = 25°C	E _{off} typ T _J = 125°C	R _{thJC} IGBT	P _C	Fig. No.	Package style	
➤ New	V	A	A	V	ns	mJ	K/W	W		Outline drawings on pages O-36...O-59	
IXGF 20N250	2500	23	-14	3.1	930	na	1.25	100	X024c	X011c	TO-263ABHV 
IXGA 20N250HV		30	12	3.1	930	na	0.83	150	X011c		
IXGF 25N250		30	15	2.9	200	na	1.10	114	X024c		
IXLF 19N250A		32	-19	3.9	250	30	0.50	250	X024c		
IXGH 25N250		60	25	2.9	200	na	0.50	250	X014a	X014a	TO-247AD 
IXGT 25N250		60	25	2.9	200	na	0.50	250	X019		
IXGT 25N250HV		60	25	2.9	200	na	0.50	250	X019a		
IXGL 75N250		110	-65	2.9	455	na	0.29	430	X022e		
IXGK 75N250		170	75	2.7	455	na	0.16	780	X020a	X015a	
IXGX 75N250		170	75	2.7	455	na	0.16	780	X015a		
➤ IXG 65I3300KN	3300	85	48 (100°C)	2.8	900	52	0.34	368	X022e		
IXEL 40N400	4000	90	40	3.5	425	205	0.26	380	X022e		
IXG 50I4500KN	4500	74	42 (100°C)	3.2	1350	73	0.34	368	X022e	X014c	TO-247HV 
IXYF 30N450		23	17	3.9	1220	na	0.54	230	X024c		
IXYT 30N450HV		60	30	3.9	1220	na	0.29	430	X019a		
IXYF 40N450		60	32	3.9	1120	na	0.43	290	X024c		
IXYH 30N450HV		60	30	3.9	1220	na	0.29	430	X014c	X015a	PLUS247 
IXYL 60N450		90	38	3.3	1360	na	0.30	417	X022e		
IXYX 40N450HV		95	40	3.9	1120	na	0.19	660	X015c		

X019a **TO-268AAHV**



X019 **TO-268AA**



X015c **PLUS247HV**



X024c **ISOPLUS i4-PAC™**



X022e **ISOPLUS264™**



X020a **TO-264**

