

Thermal Printer Mechanism

## LTPJ Series



- Max. printing speed: 75mm/sec
- Compact and light-weight
- Front open mechanism with latch function



LTPJ245D



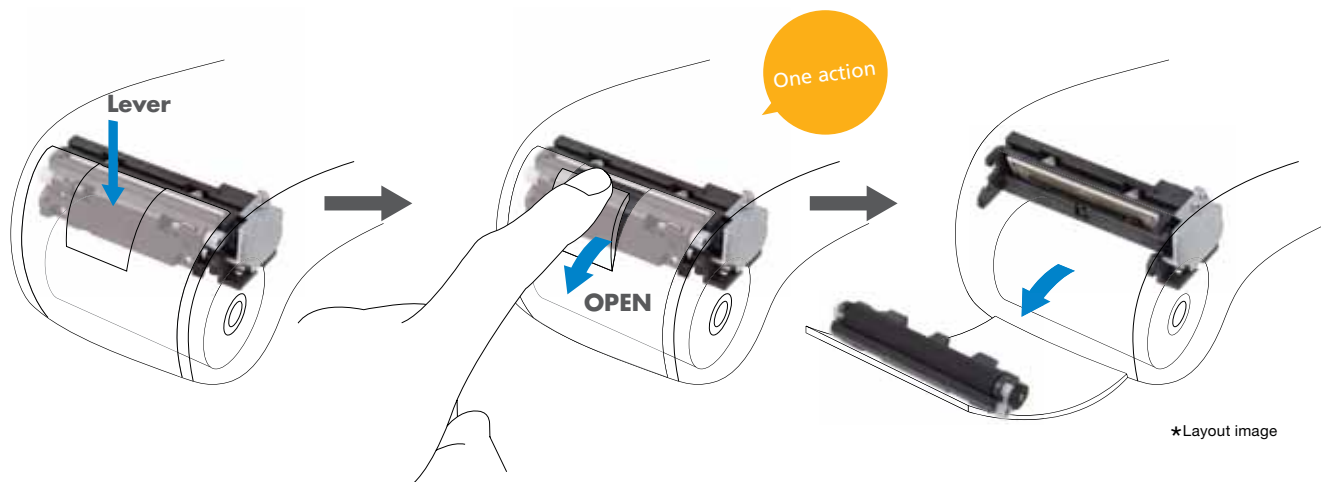
LTPJ245G

Model		LTPJ245D	LTPJ245G
Printing	Method	Thermal line dot printing	
	Number of dots / line	384	
	Resolution (dots/mm)	8	
	Paper width (mm)	58 <sup>+0</sup> <sub>-1</sub>	
	Printing width (mm)	48	
	Speed (mm/sec)max	75	
	Paper path	Straight	
Detection	Head temperature	By thermistor	
	Out of paper	By photo interrupter	
Power supply (V)	Operation voltage (Vdd)	3.0 to 3.6 / 4.75 to 5.25	3.0 to 3.6
	Operation voltage (Vp)	5.5 to 9.5	
Peak current (A)	Head	3.6 (9.5V / 64dots)	2.49 (9.5V / 45dots)
	Motor	0.6	
Service life	Pulse activation (pulse)	100 million	
	Abrasion resistance (km)	50 *1	
Operating temperature (°C)	-10 to 50		
Dimensions (W x D x H mm)	68.5 x 31.5 x 22.0 *2		68.5 x 36.5 x 22.0 *2
Mass (g)	Approx.39		Approx.38

\*1 Use recommended papers \*2 Excluding protrusion

**New latch mechanism**

The highly innovative latch mechanism provides most natural and easiest operation when paper reloading.



\*Layout image

Specifications are subject to change without notice.



Seiko Instruments GmbH  
 Siemensstraße 9  
 D-63263 Neu-Isenburg, Germany  
 Phone +49 6102 297 100  
 Fax +49 6102 297 50 100  
 info@seiko-instruments.de  
 www.seiko-instruments.de

